



Wavelink Telnet Client Industrial Browser Reference Guide

wltn-browser-rg--20060818-01

Revised 8/18/06

Copyright © 2006 by Wavelink Corporation All rights reserved.

Wavelink Corporation
6985 South Union Park Avenue, Suite 335
Midvale, Utah 84047
Telephone: (801) 316-9000
Fax: (801) 316-9099
Email: customerservice@wavelink.com
Website: <http://www.wavelink.com>

Email: sales@wavelink.com

No part of this publication may be reproduced or used in any form, or by any electrical or mechanical means, without permission in writing from Wavelink Corporation. This includes electronic or mechanical means, such as photocopying, recording, or information storage and retrieval systems. The material in this manual is subject to change without notice.

The software is provided strictly on an “as is” basis. All software, including firmware, furnished to the user is on a licensed basis. Wavelink grants to the user a non-transferable and non-exclusive license to use each software or firmware program delivered hereunder (licensed program). Except as noted below, such license may not be assigned, sublicensed, or otherwise transferred by the user without prior written consent of Wavelink. No right to copy a licensed program in whole or in part is granted, except as permitted under copyright law. The user shall not modify, merge, or incorporate any form or portion of a licensed program with other program material, create a derivative work from a licensed program, or use a licensed program in a network without written permission from Wavelink. The user agrees to maintain Wavelink’s copyright notice on the licensed programs delivered hereunder, and to include the same on any authorized copies it makes, in whole or in part. The user agrees not to decompile, disassemble, decode, or reverse engineer any licensed program delivered to the user or any portion thereof.

Wavelink reserves the right to make changes to any software or product to improve reliability, function, or design.

The information in this document is bound by the terms of the end user license agreement.

Table of Contents

Chapter 1: Introduction	3
Document Assumptions	3
Document Conventions	3
About the Telnet Client Industrial Browser	4
Licensing	5
Chapter 2: Configuring Host Profile and Emulation Parameters	7
Configuring the Industrial Browser Host Profile	7
HTTP Proxy	8
HTTPS Proxy	10
Access List	11
Configuring WEB Emulation Parameters	13
Chapter 3: Using the Industrial Browser	15
Basic Navigation	15
Specifying the Home Page	16
Using the WEB Virtual Emulation Keyboard	16
Chapter 4: Developing Web Pages for the Industrial Browser	19
META Tags	19
OnAllKeys, OnKey..., OnKey0x...	20
OnStartup, IDA	20
Printing	20
Scanner	22
ScannerNavigate, ScannerProcessed	22
Symbologies	23
IDA Commands	24
IDA_KEYBOARD_WEB, IDA_KEYBOARD_SHOW, or IDA_KEYBOARD_UP	26
IDA_KEYBOARD_NUM or IDA_KEYBOARD_NUMERIC	26
IDA_KEYBOARD_NONE, IDA_KEYBOARD_HIDE, or IDA_KEYBOARD_DOWN	26
IDA_REPRINT	26
IDA_SCAN_DISABLE or IDA_SCAN_SUSPEND	26
IDA_SCAN_DISABLE or IDA_SCAN_RESUME	27
IDA_SESSION_DISCONNECT	27
IDA_SIP_SHOW or IDA_SIP_UP	27
IDA_SIP_HIDE or IDA_SIP_DOWN	27
IDA_SIP_TOGGLE or IDA_SIP_TOGGLEHIDE	27
IDA_URL_BACK or IDA_BACK	27
IDA_URL_BACK_DISABLE or IDA_BACK_DISABLE	27
IDA_URL_BACK_ENABLE or IDA_BACK_ENABLE	27
IDA_URL_FORWARD or IDA_FORWARD	28
IDA_URL_FORWARD_DISABLE or IDA_FORWARD_DISABLE	28

IDA_URL_FORWARD_ENABLE or IDA_FORWARD_ENABLE .. 28
IDA_URL_HOME or IDA_HOME 28
IDA_URL_HOME_DISABLE or IDA_HOME_DISABLE 28
IDA_URL_HOME_ENABLE or IDA_HOME_ENABLE 28
IDA_URL_REFRESH or IDA_REFRESH 29
IDA_URL_STOP or IDA_STOP 29
IDA_ZOOM_DISABLE or IDA_FONT_DISABLE 29
IDA_ZOOM_ENABLE or IDA_FONT_ENABLE 29
IDA_ZOOM_LARGER or IDA_FONT_LARGER 29
IDA_ZOOM_LARGEST or IDA_FONT_LARGEST 29
IDA_ZOOM_MEDIUM or IDA_FONT_MEDIUM 30
IDA_ZOOM_MINUS or IDA_FONT_MINUS 30
IDA_ZOOM_PLUS or IDA_FONT_PLUS 30
IDA_ZOOM_SMALLER or IDA_FONT_SMALLER 30
IDA_ZOOM_SMALLEST or IDA_FONT_SMALLEST 30

Appendix A: Wavelink Contact Information **33**

Index **35**

Chapter 1: Introduction

This document provides information about using and developing for the Telnet Client Industrial Browser.

This section provides the following information:

- Document Assumptions
- Document Conventions
- About the Telnet Client Industrial Browser

Document Assumptions

This document assumes that the reader has the following:

- Knowledge of wireless networks and wireless networking protocols.
- Knowledge of TCP/IP, including IP addressing, subnet masks, routing, BootP/DHCP, WINS, and DNS.
- Knowledge of Wavelink Telnet Client.
- Knowledge of web page development, including implementation of META tags and IDA commands.

Document Conventions

The following section contains information about text-formatting conventions in this manual.

Table 1-1 lists the conventions that are used in this manual.

Convention	Description
<i>courier new</i>	<p>Any time you interact directly with text-based user interface options, such as a button, or type specific information into an text box, such as a file pathname, that option appears in the <i>Courier New</i> text style. This text style is also used for keys that you press, filenames, directory locations, and status information.</p> <p>For example:</p> <p>Press <code>ENTER</code>.</p> <p>Click <code>OK</code>.</p>
bold	<p>Any time this document refers to a labelled user interface option, such as descriptions of the choices in a dialog box, that option appears in the Bold text style.</p> <p>Examples:</p> <p>Enable the DHCP checkbox.</p> <p>Access the TelnetCE Client Session menu.</p>
<i>italics</i>	<p>Italicized text is used to indicate the name of a window or dialog box.</p> <p>For example:</p> <p>The <i>Update Utility</i> dialog box.</p> <p>The <i>Profile Manager</i> dialog box.</p>

Table 1-1: *Text-Formatting Conventions*

About the Telnet Client Industrial Browser

Wavelink Telnet Client includes an Industrial Browser interface that gives you the ability to access web-based applications from a mobile device. The Industrial Browser supports PocketPC 2003, Windows Mobile 5.0, Windows 2000/XP, and Windows CE .NET 4.2/5.0.

NOTE The Industrial Browser is included in Telnet Client 6.0 and later versions.

Licensing

The Telnet Client Industrial Browser requires a license for full functionality. You can use the Telnet Client Industrial Browser without a license, but you will be limited to the demo version, which does not provide full Telnet Client functionality.

There are two ways to license Telnet Client Industrial Browser:

- If you do not currently have a Telnet Maintenance license, you can purchase a Telnet Client 6.0 Standalone Browser license. (A separate Browser Maintenance license is also available.)
- If you currently have a Telnet Maintenance license, you can purchase an Industrial Browser add-on license. (Browser Maintenance is included).

NOTE To obtain Telnet Client licenses, please contact Wavelink Customer Service. *Appendix A: Wavelink Contact Information* on page 33 provides Wavelink contact information.

Chapter 2: Configuring Host Profile and Emulation Parameters

This chapter provides information about the following:

- Configuring the Industrial Browser Host Profile
- Configuring WEB Emulation Parameters

Configuring the Industrial Browser Host Profile

A host profile defines the parameters that the Telnet Client should use when it attempts to initiate a Telnet connection with a specific host. You may configure as many host profiles for the Telnet Client as you wish.

NOTE For more information on Host Profiles, see the Telnet Client User's Guide.

When you configure the host profile for WEB-type emulation, various tabs appear offering different options for WEB settings.

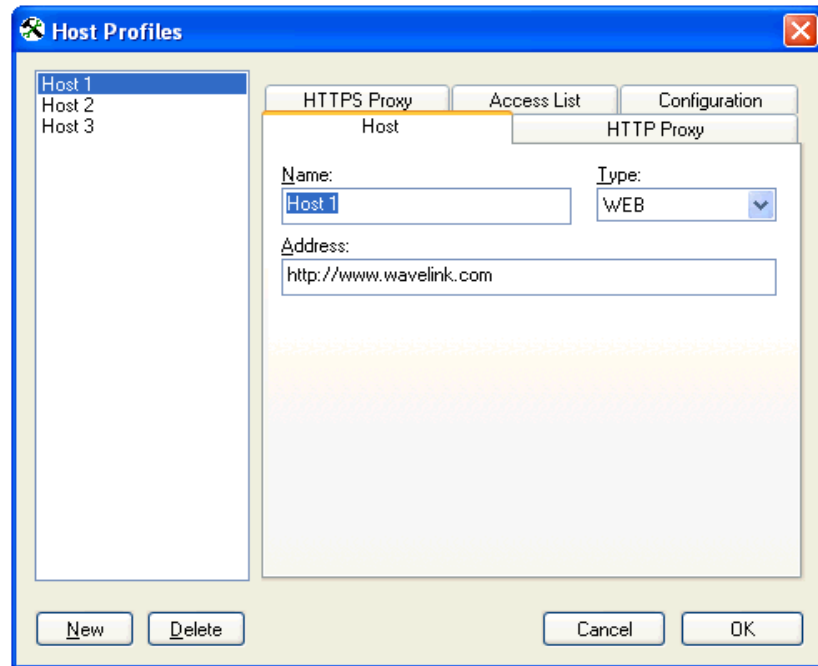


Figure 2-1. *Configuring WEB Settings*

The following sections describe the parameters of each tab used to configure WEB emulation settings in the *Host Profiles* dialog box.

HTTP Proxy

Use the HTTP Proxy tab to configure proxy connections for WEB emulation.

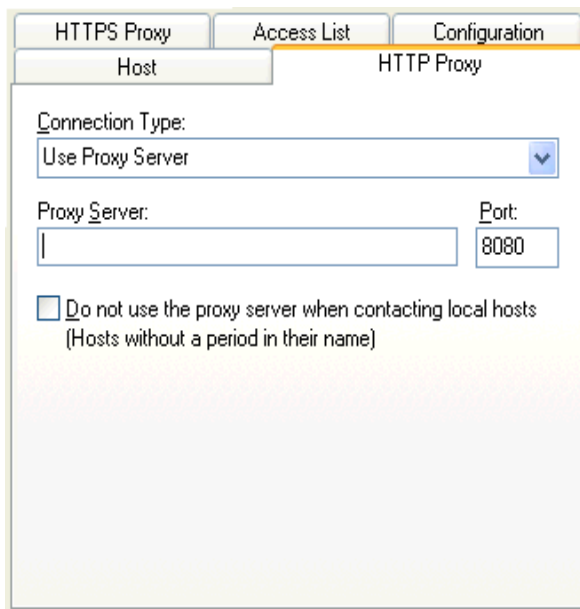


Figure 2-2. *Configuring the HTTP Proxy Tab*

The following list describes the options and configurable parameters in the HTTP Proxy tab.

- | | |
|------------------------|---|
| Connection Type | Indicates the type of connection for the host profile to use.

Possible Values: <Direct Connection> <Use Explorer Default> <Use Proxy Server>

Default Value: <Direct Connection> |
| Proxy Server | Indicates the location of the proxy server.

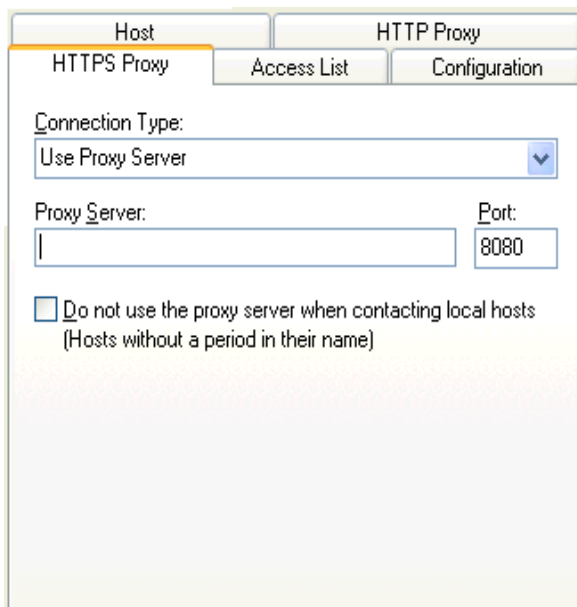
Possible Values: Any valid IP address, host name, or web address.

Default Value: <None> |

- Port** Indicates the network port for the proxy server.
Possible Values: Any valid port number.
Default Value: <8080>
- Do not use the proxy server when contacting local hosts** Indicates whether the Telnet Client should use the proxy server when contacting hosts that reside on the same network.
Possible Values: <Enabled> <Disabled>
Default Value: <Disabled>

HTTPS Proxy

Use the HTTPS Proxy tab to configure secure proxy connections for WEB emulation.



The screenshot shows a configuration window with two main tabs: "Host" and "HTTP Proxy". The "Host" tab is selected and contains three sub-tabs: "HTTPS Proxy", "Access List", and "Configuration". The "HTTPS Proxy" sub-tab is active. The configuration area includes a "Connection Type:" dropdown menu set to "Use Proxy Server". Below this are two input fields: "Proxy Server:" (empty) and "Port:" (set to "8080"). At the bottom, there is a checkbox labeled "Do not use the proxy server when contacting local hosts (Hosts without a period in their name)", which is currently unchecked.

Figure 2-3. Configuring the HTTPS Proxy Tab

The following list describes the options and configurable parameters in the HTTPS Proxy tab.

Connection Type	Indicates the type of connection for the host profile to use. Possible Values: <Direct Connection> <Use Explorer Default> <Use Proxy Server> Default Value: <Direct Connection>
Proxy Server	Indicates the location of the proxy server Possible Values: Any valid IP address, host name, or web address. Default Value: <None>
Port	Indicates the network port for the proxy server. Possible Values: Any valid port number. Default Value: <8080>
Do not use the proxy server when contacting local hosts	Indicates whether the Telnet Client should use the proxy server when contacting hosts that reside on the same network. Possible Values: <Enabled> <Disabled> Default Value: <Disabled>

Access List

Use the Access List tab to configure which web addresses can be accessed by the Telnet Client Industrial Browser.

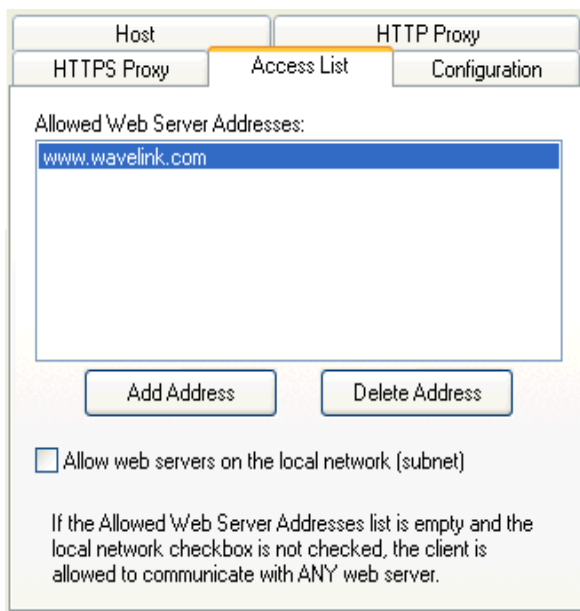


Figure 2-4. *Configuring the Access List Tab*

The following list describes the options and configurable parameters in the Access List tab.

Allowed Web Server Addresses

A list of web addresses that the Telnet Client is permitted to connect with.

Possible Values: Any valid IP address, host name, or web address.

Default Value: <None>

Allow web servers on the local network (subnet)

Indicates whether the Telnet Client can connect with any web server, or only with servers on the local network.

Possible Values: <Enabled> <Disabled>

Default Value: <Disabled>

Add Address	Select this button to add a new IP or web address to the list of addresses that Telnet Client is permitted to connect with.
Delete Address	Select this button to delete any address in the list.

Configuring WEB Emulation Parameters

You can manually configure certain Telnet Client emulation parameters on a per-host basis.

NOTE For more information on configuring Emulation Parameters, see the Telnet Client User's Guide.

Use the WEB tab in the *Settings* dialog box to configure parameters for WEB emulation.

The following table describes the configurable options in the WEB tab.

WEB Detect Out-Of-Range	Indicates whether Telnet will prevent the user from interacting with a web page if the Wireless LAN adapter is not associated with an Access Point. Possible Values: <Enabled> <Disabled> Default: <Enabled>
WEB Display Images	Determines if embedded images and/or placeholders should be displayed on web pages. Possible Values: <No Images or Placeholders> <Display Placeholders Only> <Display Images Only> <Display Images and Placeholders> Default: <Display Images and Placeholders>

WEB HTTP Version for Direct Connections Determines if the HTTP 1.0 or HTTP 1.1 protocol should be used for direct (non-proxy) connections.

Possible Values: <HTTP 1.0> <HTTP 1.1>

Default: <HTTP 1.1>

WEB HTTP Version for Proxy Connections Determines if the HTTP 1.0 or HTTP 1.1 protocol should be used through proxy connections.

Possible Values: <HTTP 1.0> <HTTP 1.1>

Default: <HTTP 1.0>

WEB Play Background Sounds Determines whether or not sounds embedded in the web page will be played.

Possible Values: <No> <Yes>

Default: <Yes>

NOTE Sounds will only be played if supported by the mobile device's sound card

WEB Underline Links Determines if links (anchors) on the web page will be underlined.

Possible Values: <No> <Yes>

Default: <Yes>

Chapter 3: Using the Industrial Browser

This chapter provides information about using the Telnet Client Industrial Browser, including the following:

- Basic Navigation
- Specifying the Home Page
- Using the WEB Virtual Emulation Keyboard

Basic Navigation

The Telnet Client Industrial Browser interface provides basic commands for navigating web pages.

To navigate within the Industrial Browser:

- 1 Tap and hold the on the screen.

A menu appears.

- 2 From this menu, you can select from the following options:

Back	Returns the browser to the previous web page.
Forward	Returns to the screen displayed before Back was selected.
Stop	Stops the web page from loading.
Refresh	Reloads the current web page.

Home	Returns the browser to the specified home page.
Text Size	Displays a menu with the following text size options: <ul style="list-style-type: none"> • Largest • Larger • Medium • Smaller • Smallest

Specifying the Home Page

The home page is the first page users will see when connecting to the Industrial Browser; it is also the page users will be returned to when they select `Home`. The home page will be the location you set up in the Host Profile for WEB emulation. This can either be an IP address or a specific web address.

Using the WEB Virtual Emulation Keyboard

The Telnet Client Industrial Browser contains a default emulation keyboard. You can access the keyboard through the Telnet Client **Options** menu.

Figure 3-1 shows the Telnet Client virtual emulation keyboard for WEB emulation.

Back	Fwd	Stop	Refresh	Home
Prev Sess		Next Sess		Close
Key Clicks		Quiet	Info	Diags
Alpha	Num	Func	Punc	Cfg
		Off	←	→
			↓	↑

Figure 3-1. *Telnet Client WEB Virtual Emulation Keyboard*

The following list describes the function of the keys in the WEB virtual emulation keyboard.

Back	Returns the browser to the previous web page.
Fwd	Returns to the screen displayed before Back was selected.
Stop	Stops the web page from loading.
Refresh	Reloads the current web page.
Home	Returns the browser to the specified home page.
Prev Sess	Cycles to the previous Telnet Client session.
Next Sess	Cycles to the next Telnet Client session.
Close	Disconnects the session. (Only available when the session is connected.)
Key Clicks	Turns key clicks on/off
Quiet	Turns quiet mode on/off.
Info	Shows/hides the following information about the mobile device: <ul style="list-style-type: none">• Telnet Client version information• MAC address• IP address• ESSID
Diags	Allows you to access the Telnet Client diagnostic tools.

Alpha	Displays the alpha keys for WEB emulation, including: <ul style="list-style-type: none">• a-z• Shift, Ctl, Alt• Esc, Tab, Caps, Enter, Space
Num	Displays the numeric keyboard for WEB emulation, including: <ul style="list-style-type: none">• 0-9• Shft• Esc, Tab, Ins, Enter, Space
Func	Displays the function keys for WEB emulation, including: <ul style="list-style-type: none">• F1-F24
Punc	Displays the punctuation keys for WEB emulation, including: <ul style="list-style-type: none">• Punctuation keys• Enter, Space
Cfg	Display the virtual emulation keyboard.
Off	Hides the virtual keyboard.
Arrow Keys	Moves the web page up and down or from side to side.

Chapter 4: Developing Web Pages for the Industrial Browser

This chapter provides information on the META tags and IDA commands supported by the Telnet Client Industrial Browser. You can use these tags to develop custom web pages that will enable specific functionality in the Industrial Browser. The following sections are included:

- META Tags
- IDA Commands

META Tags

META tags are included at the top of a web page between the <HEAD> and </HEAD> tags. They are evaluated in the order they appear in the web page (from top to bottom). The Industrial Browser is designed to work only with tags it recognizes; it will ignore tags it does not recognize. If a META tag starts with the `iBrowse_` prefix, that prefix will be ignored. For example, `iBrowse_ScannerNavigate` is the same as `ScannerNavigate`.

Each META tag has the following format:

```
<meta http-equiv="action_name" content="action_type">
```

In the preceding format, the `action_type` can be a URL, an IDA action, or a JavaScript function. Some actions allow the action type to include replacement values; a `%s` or `%d` or `%ld` string can be used to indicate where each replacement item belongs.

NOTE These strings are interchangeable and can be used in any format that you prefer.

The following are META tags supported by the Telnet Client Industrial Browser:

- `OnAllKeys`, `OnKey...`, `OnKey0x...`
- `OnStartup`, `IDA`
- `Printing`

- Scanner
- ScannerNavigate, ScannerProcessed
- Symbologies

OnAllKeys, OnKey..., OnKey0x...

The `OnKey...` and `OnKey0x...` META tags describe an action that will occur if a particular key is pressed. The key values that are evaluated are the same key values used by Keyboard Creator.

The `OnKey0x` format requires a hexadecimal number, while the `OnKey` format will require a decimal format. The key value is also case sensitive.

For example:

`OnKey50` and `OnKey0x32` will both respond to the 2 key.

`OnKey65` and `OnKey97` would be used to respond to both the upper and lowercase A.

The `OnAllKeys` tag will perform the prescribed action each time a key is pressed. The action type can include one argument, which is the string representing the decimal value of the key.

NOTE Due to browser limitations, some keys (such as `Tab`) may not always be handled by this tag.

OnStartup, IDA

The `OnStartup` and `IDA` META tags allow you to specify actions that will be taken when the web page is first loaded. The action type must be one of the action types described in *IDA Commands* on page 24.

Printing

You can send data to the printer by including the data in the META tags. Use the `Print_Continue` and `Print_Finish` action names to specify the print data. The print data is in the action type of these META tags. The print data in each META tag should all be on the same line and should not be more

than 1024 characters in length; however the total print data can be larger than 1024 characters. In addition to standard characters, you can use the following:

- `\r` to specify a return character
- `\n` to specify a newline character
- `\t` to specify a tab character
- `\\` to specify a backslash character
- `\##` or `\x##` to specify any other character, where `##` is replaced with a two-digit hexadecimal number

`Print_Continue` should be used for all but the last section of print data, and `Print_Finish` should be used for the last section of print data.

NOTE If desired, the action names `Print_Done`, `Print_Final`, `PLSeriesLabel_Print` and `ZebraLabel_Print` can be used instead of `Print_Finish`.

The META tag `Print_Callback` can be used to specify the action that will occur after the printing is completed. The argument will be 0 if the printing was successful, or a non-zero number if the printing failed.

NOTE If desired, the action names `Print_Complete`, `ZebraLabel_Complete` and `PLSeriesLabel_Complete` can be used instead of `Print_Callback`.

The META tag `Print_Setup_TP` can be used to specify the IP Address and port of the printer if using TCP printing. If this tag is used, it must be specified before the `Print_Finish` tag. The format is `address:port`.

For example:

```
<meta http-equiv="Print_Setup_TP"
content="192.168.1.59:7429">

<meta http-equiv="Print_Continue"
content="\22First Line\22\r\n">
```

```
<meta http-equiv="Print_Continue"  
content="\22Middle\22\r\n">
```

```
<meta http-equiv="Print_Finish"  
content="\22Last Line\22\r\n">
```

```
<meta http-equiv="Print_Callback"  
content="printresult.htm&status=%s"
```

Scanner

If the action name is `Scanner` and the action type is `Enabled` or `Resume`, the scanner will be enabled when the page is first loaded. If the action type is `Disabled` or `Suspend`, the scanner will be disabled when the page is first loaded.

There are three additional scanner action types supported by Telnet Industrial Browser:

- `AutoTab`
- `AutoEnter`
- `AutoEnterAndTab`

These action types will enable the scanner and will cause the scan data to be followed by an enter or tab key (or both).

Once enabled or disabled, the scanner will stay in that state until some other action (such as a `META` tag or `IDA` action) changes the state or until the user changes sessions. It is recommended that every web page include support for enabling and disabling the scanner as appropriate.

ScannerNavigate, ScannerProcessed

The `ScannerNavigate` `META` tag is used to handle raw scan data. The `ScannerProcessed` tag is similar, but gives the scan data after it has been modified by the scan handlers, etc. in the Emulation Parameters.

If the action type has zero to three arguments, then the arguments are (from left to right): the barcode data, the symbology type, and the time stamp.

If the action type has four or five arguments, then the arguments are (from left to right): the barcode data, source scanner name, symbology type, time stamp, and barcode length.

NOTE Refer to the following section for supported symbology types.

Symbologies

You can enable and disable different symbologies by using the symbology as the action name, and `Enabled` or `Disabled` as the action type. The symbologies supported by Telnet Client Industrial Browser are as follows:

AUSTRALIA_POSTAL	CUECODE	PLANET
AZTEC	D2OF1ATA	PLESSY
AZTECMESA	D2OF5	POSICODE
BOOKLAND	DATAMATRIX	POSTNET
BRITISH_POSTAL	DUTCH_POSTAL	QRCODE
CANADA_POSTAL	EAN8	RSS14
CHINA_POSTAL	EAN13	RSSEXPANDED
CODABAR	I2OF5	RSSLIMITED
CODABLOCK	JAPAN_POSTAL	SIGNATURE
CODE11	KOREA_POSTAL	TELEPEN
CODE16K	MACROPDF	TLC39
CODE32	MACROMICROPDF	TRIOPTIC39
CODE39	MAXICODE	UCC128
CODE49	MATRIX2OF5	UPCA
CODE93	MICROPDF	UPCE
CODE128	MSI	UPCE0
COMPOSITE	OCR	UPCE1
COUPONCODE	PDF417	WEBCODE

In addition to the preceding symbologies, the value `ALL_DECODERS` can be used to enable or disable all the symbologies.

For example:

To enable only UPCA, use the META tags in this order

```
<meta http-equiv="ALL_DECODERS" content="Disabled">
```

```
<meta http-equiv="UPCA" content="Enabled">
```

IDA Commands

IDA commands are special values used to invoke a device action, program action, or emulator action within the Telnet Industrial Browser. These values can be specified in many of the special META tags described above, as URLs for the user to click on, or called inside JavaScript functions.

For example:

```
<a href="ida:IDA_SESSION_DISCONNECT">
Close the session</a>
```

-Or-

```
<script language=javascript>
function OnError( )
{
    // Disconnect the Session
    location.href = "ida:IDA_SESSION_DISCONNECT" ;

    // Alternate Method
    document.location = "ida:IDA_SESSION_DISCONNECT" ;

    // Another Alternate Method
    window.navigate ( "ida:IDA_SESSION_DISCONNECT" ) ;
}
</script>
```

NOTE It is recommended that each IDA command be preceded by the `ida` prefix; however, the command will generally work without the prefix.

The following are IDA commands supported by the Telnet Industrial Browser:

- IDA_KEYBOARD_WEB, IDA_KEYBOARD_SHOW, or IDA_KEYBOARD_UP
- IDA_KEYBOARD_NUM or IDA_KEYBOARD_NUMERIC
- IDA_KEYBOARD_NONE, IDA_KEYBOARD_HIDE, or IDA_KEYBOARD_DOWN
- IDA_REPRINT

- IDA_SCAN_DISABLE or IDA_SCAN_SUSPEND
- IDA_SCAN_DISABLE or IDA_SCAN_RESUME
- IDA_SESSION_DISCONNECT
- IDA_SIP_SHOW or IDA_SIP_UP
- IDA_SIP_HIDE or IDA_SIP_DOWN
- IDA_SIP_TOGGLE or IDA_SIP_TOGGLEHIDE
- IDA_URL_BACK or IDA_BACK
- IDA_URL_BACK_DISABLE or IDA_BACK_DISABLE
- IDA_URL_BACK_ENABLE or IDA_BACK_ENABLE
- IDA_URL_FORWARD or IDA_FORWARD
- IDA_URL_FORWARD_DISABLE or IDA_FORWARD_DISABLE
- IDA_URL_FORWARD_ENABLE or IDA_FORWARD_ENABLE
- IDA_URL_HOME or IDA_HOME
- IDA_URL_HOME_DISABLE or IDA_HOME_DISABLE
- IDA_URL_HOME_ENABLE or IDA_HOME_ENABLE
- IDA_URL_REFRESH or IDA_REFRESH
- IDA_URL_STOP or IDA_STOP
- IDA_ZOOM_DISABLE or IDA_FONT_DISABLE
- IDA_ZOOM_ENABLE or IDA_FONT_ENABLE
- IDA_ZOOM_LARGER or IDA_FONT_LARGER
- IDA_ZOOM_LARGEST or IDA_FONT_LARGEST
- IDA_ZOOM_MEDIUM or IDA_FONT_MEDIUM

- `IDA_ZOOM_MINUS` or `IDA_FONT_MINUS`
- `IDA_ZOOM_PLUS` or `IDA_FONT_PLUS`
- `IDA_ZOOM_SMALLER` or `IDA_FONT_SMALLER`
- `IDA_ZOOM_SMALLEST` or `IDA_FONT_SMALLEST`

IDA_KEYBOARD_WEB, IDA_KEYBOARD_SHOW, or IDA_KEYBOARD_UP

Using one of these commands causes the emulation on-screen keyboard to be displayed.

IDA_KEYBOARD_NUM or IDA_KEYBOARD_NUMERIC

Using one of these commands causes the numeric on-screen keyboard to be displayed.

IDA_KEYBOARD_NONE, IDA_KEYBOARD_HIDE, or IDA_KEYBOARD_DOWN

These commands cause the emulation and numeric on-screen keyboards to be hidden.

IDA_REPRINT

Using this command causes the last data supplied to the printer to be sent again. The print data will remain available until something else is printed or until the session is disconnected.

IDA_SCAN_DISABLE or IDA_SCAN_SUSPEND

Use one of these commands to disable the bar code scanner. When the bar code scanner is disabled, pressing the mobile device trigger will have no effect.

IDA_SCAN_DISABLE or IDA_SCAN_RESUME

Using one of these commands enables the bar code scanner. The bar code scanner will not actually scan for bar codes unless the mobile device trigger is pulled.

IDA_SESSION_DISCONNECT

Use this command to disconnect the session and close the Industrial Browser.

IDA_SIP_SHOW or IDA_SIP_UP

These commands cause the SIP on-screen keyboard to become visible.

IDA_SIP_HIDE or IDA_SIP_DOWN

These commands cause the SIP on-screen keyboard to become hidden.

IDA_SIP_TOGGLE or IDA_SIP_TOGGLEHIDE

Using one of these commands will cause the SIP on-screen keyboard to become visible if it is hidden, or hidden if it is visible.

IDA_URL_BACK or IDA_BACK

These commands cause the Industrial Browser to display the screen previous to the current screen. If there are no previous screens, no action will be taken.

IDA_URL_BACK_DISABLE or IDA_BACK_DISABLE

Use one of these commands to disable the `Back` menu option so it cannot be selected by the user.

NOTE The `IDA_URL_BACK` or `IDA_BACK` commands are not affected and will still work.

IDA_URL_BACK_ENABLE or IDA_BACK_ENABLE

Use one of these commands to enable the `Back` menu option so it can be selected by the user. The menu option could still be disabled if there is no page to go back to.

IDA_URL_FORWARD or IDA_FORWARD

These commands cause the Industrial Browser to display the screen that was being displayed before the last `Back` command. If there was no previous screen, no action will be taken.

IDA_URL_FORWARD_DISABLE or IDA_FORWARD_DISABLE

Use one of these commands to disable the `Forward` menu option so it cannot be selected by the user.

NOTE The `IDA_URL_FORWARD` or `IDA_FORWARD` commands are not affected and will still work.

IDA_URL_FORWARD_ENABLE or IDA_FORWARD_ENABLE

Use one of these commands to enable the `Forward` menu option so it can be selected by the user.

NOTE The menu option could still be disabled if there is no page to return to.

IDA_URL_HOME or IDA_HOME

These commands cause the Industrial Browser to proceed to the location specified by the current Host Profile. It is completely independent from the `Home` location for any other web browsers on the device.

IDA_URL_HOME_DISABLE or IDA_HOME_DISABLE

Use one of these commands to disable the `Home` menu option so it cannot be selected by the user.

NOTE The `IDA_URL_HOME` or `IDA_HOME` commands are not affected and will still work.

IDA_URL_HOME_ENABLE or IDA_HOME_ENABLE

Use one of these commands to enable the `Home` menu option so it can be selected by the user.

IDA_URL_REFRESH or IDA_REFRESH

These commands cause the web page to be reloaded. The server will be queried to verify that the page contents are up-to-date.

IDA_URL_STOP or IDA_STOP

These commands cause the web page to stop loading. If the web page is already fully loaded, this action has no effect.

IDA_ZOOM_DISABLE or IDA_FONT_DISABLE

Use these commands to disable the **Text Size** menu to be disabled so it cannot be selected by the user.

NOTE The IDA options to set the zoom level (text size) are not affected and will still work.

IDA_ZOOM_ENABLE or IDA_FONT_ENABLE

Use these commands to enable the **Text Size** menu so it can be selected by the user.

IDA_ZOOM_LARGER or IDA_FONT_LARGER

Using one of these commands causes the Industrial Browser to display the text using a large text size.

NOTE This is a global setting. Other Telnet sessions, Internet Explorer, and Pocket Internet Explorer will default to using this text size as well.

IDA_ZOOM_LARGEST or IDA_FONT_LARGEST

Using one of these commands causes the Industrial Browser to display the text using the largest text size supported by the browser.

NOTE This is a global setting. Other Telnet sessions, Internet Explorer, and Pocket Internet Explorer will default to using this text size as well.

IDA_ZOOM_MEDIUM or IDA_FONT_MEDIUM

Using one of these commands causes the Industrial Browser to display the text using a medium text size.

NOTE This is a global setting. Other Telnet sessions, Internet Explorer, and Pocket Internet Explorer will default to using this text size as well.

IDA_ZOOM_MINUS or IDA_FONT_MINUS

These commands cause the Industrial Browser to display the text using the next-smaller text size than the current text size.

NOTE This is a global setting. Other Telnet sessions, Internet Explorer, and Pocket Internet Explorer will default to using this text size as well.

IDA_ZOOM_PLUS or IDA_FONT_PLUS

These commands cause the Industrial Browser to display the text using the next-larger text size than the current text size.

NOTE This is a global setting. Other Telnet sessions, Internet Explorer, and Pocket Internet Explorer will default to using this text size as well.

IDA_ZOOM_SMALLER or IDA_FONT_SMALLER

Using one of these commands causes the Industrial Browser to display the text using a small text size.

NOTE This is a global setting. Other Telnet sessions, Internet Explorer, and Pocket Internet Explorer will default to using this text size as well.

IDA_ZOOM_SMALLEST or IDA_FONT_SMALLEST

Using one of these commands causes the Industrial Browser to display the text using the smallest text size supported by the browser.

NOTE This is a global setting. Other Telnet sessions, Internet Explorer, and Pocket Internet Explorer will default to using this text size as well.

Appendix A: Wavelink Contact Information

If you have comments or questions regarding this product, please contact Wavelink Customer Service via email or telephone.

Email: customerservice@wavelink.com

Phone: 425-823-0111

Index

A

- about
 - Industrial Browser 4
- Access List 13

B

- basic navigation 15

C

- configuring
 - Emulation Parameters 7
 - Host Profile 7
- contact information 33

D

- developing
 - web pages 19
- document
 - assumptions 3
 - conventions 3

E

- Emulation Parameters
 - configuring 7

H

- home page
 - specifying 16
- Host Profile
 - Access List 13
 - configuring 7
 - HTTP Proxy 8
 - HTTPS Proxy 10

I

- IDA commands 26
- Industrial Browser
 - about 4
 - basic navigation 15

- licensing 5
 - using 15
- introduction 3

L

- licensing 5

M

- META tags 19

U

- using
 - Industrial Browser 15
 - WEB Virtual Emulation Keyboard 16

W

- Wavelink contact information 33
- web pages
 - developing 19
 - IDA commands 24
 - META tags 20
- WEB Virtual Emulation Keyboard
 - using 16

