

SPEAKEASY USER TRAINING

Speakeasy allows users to create personalized voice profiles, which can improve the positive results when you are using speech-to-text. When you create a voice profile, you speak a set of selected words to train the engine to recognize your voice and pronunciation.

The words used for voice profile training come from the grammar files available on the device. Use the Grammar File Manager to select the terms to use for voice training before the grammar files are deployed to the device.

- Selecting Terms Available for Voice Training
- Specifying Voice Profile Training Options
- Creating a Voice Profile

SELECTING TERMS AVAILABLE FOR VOICE TRAINING

Before a word or phrase can be selected for voice training, you must define possible voice training words in the grammar file. The !slot command in a grammar file specifies which words and phrases should be available for voice training.

To open a grammar file for editing, you must export the grammar file using the Grammar File Manager. After the file has been exported, you can edit it using a text editor. Then import the file using the Grammar File Manager so it is available for download to the device.

- Exporting and Opening the Grammar File
- Editing the Grammar File

EXPORTING AND OPENING THE GRAMMAR FILE

To edit a grammar file, export it using the Grammar File Manager, edit it with a text editor, and then import it using the Grammar File Manager. The Grammar File Manager is included with the Speech-to-Text package — you must have the Speech-to-Text package installed in order to use the Grammar File Manager. You can access the Grammar File Manager through the Avalanche Console, the ActiveSync configuration utility, or the Windows Start menu, depending on how you installed the Speech-to-Text package.

To export a grammar file from the Avalanche Java Console:

1. From the **Profiles** tab, select the software profile that has the speech-to-text base package.
2. Select the speech-to-text base package from the Software Packages list and click **Configure**.
3. The *Configure Software Package* dialog box appears. Select **Grammar File Manager** from the list and click **Launch**.
4. Select the grammar file you want to edit from the list and click **Export**.
5. The *Save As* dialog box appears. Navigate to the location where you want to save the file and click **Save**.

6. The file is saved as a text file with a .bnf extension. Open it with a text editor such as Notepad.

To export a grammar file for an ActiveSync installation:

1. Create an ActiveSync connection to the device.
2. Click **Start > Programs > Wavelink SpeechToText ActiveSync Support > Install to Device**.
3. The *Windows Speech-to-Text Installer* appears. Click **Grammar File Manager**.
4. Select the grammar file you want to edit from the list and click **Export**.
5. The *Save As* dialog box appears. Navigate to the location where you want to save the file and click **Save**.
6. The file is saved as a text file with a .bnf extension. Open it with a text editor such as Notepad.

To export a grammar file for the Windows TE Client:

1. Click **Start > Programs > Wavelink SpeechToText Support > Grammar File Manager**.
2. Select the grammar file you want to edit from the list and click **Export**.
3. The *Save As* dialog box appears. Navigate to the location where you want to save the file and click **Save**.
4. The file is saved as a text file with a .bnf extension. Open it with a text editor such as Notepad.

EDITING THE GRAMMAR FILE

To edit the grammar file to enable voice training, perform two steps. First, group the terms that you want to use for training separate from the terms that you don't want to use for training. Second, use the !slot command to specify the group of words to use for training.

NOTE: This paper provides an overview of how to edit a grammar file for voice profiles. For details on grammar file structure or editing grammar files, see the *Speakeasy User Guide*.

To group terms together:

Assign each group a name, and then group the terms in the grammar file together under that name.

In the example below, the highlighted line shows that groups YesNo and Cancel are included in the main group, Speech. Then each term in the groups is defined on the last two lines.

```
!grammar YesNoCancel;  
!start <Speech>;  
!slot <YesNo>;  
<Speech>: <YesNo> | <Cancel>;  
  
<YesNo>: yes | no;  
<Cancel>: cancel;
```

Notice that the !start command specifies the main group, Speech. Since Speech includes YesNo and Cancel, this grammar file causes the engine to listen for all the terms in both those groups ("Yes," "no," and "cancel").

To use the !slot command:

After the terms have been grouped, use the !slot command on the line following the !start command. When you use the !slot command, specify the group of terms that you want to use for training. The example above enables voice training for the terms in the group YesNo.

The !slot command only works for groups of simple terms such as words, phrases, and alternate terms. You cannot use the !slot command for groups that contain other groups (such as Speech in the above example) or complex commands. For example, do not use the !slot command for groups that contain !repeat or #.

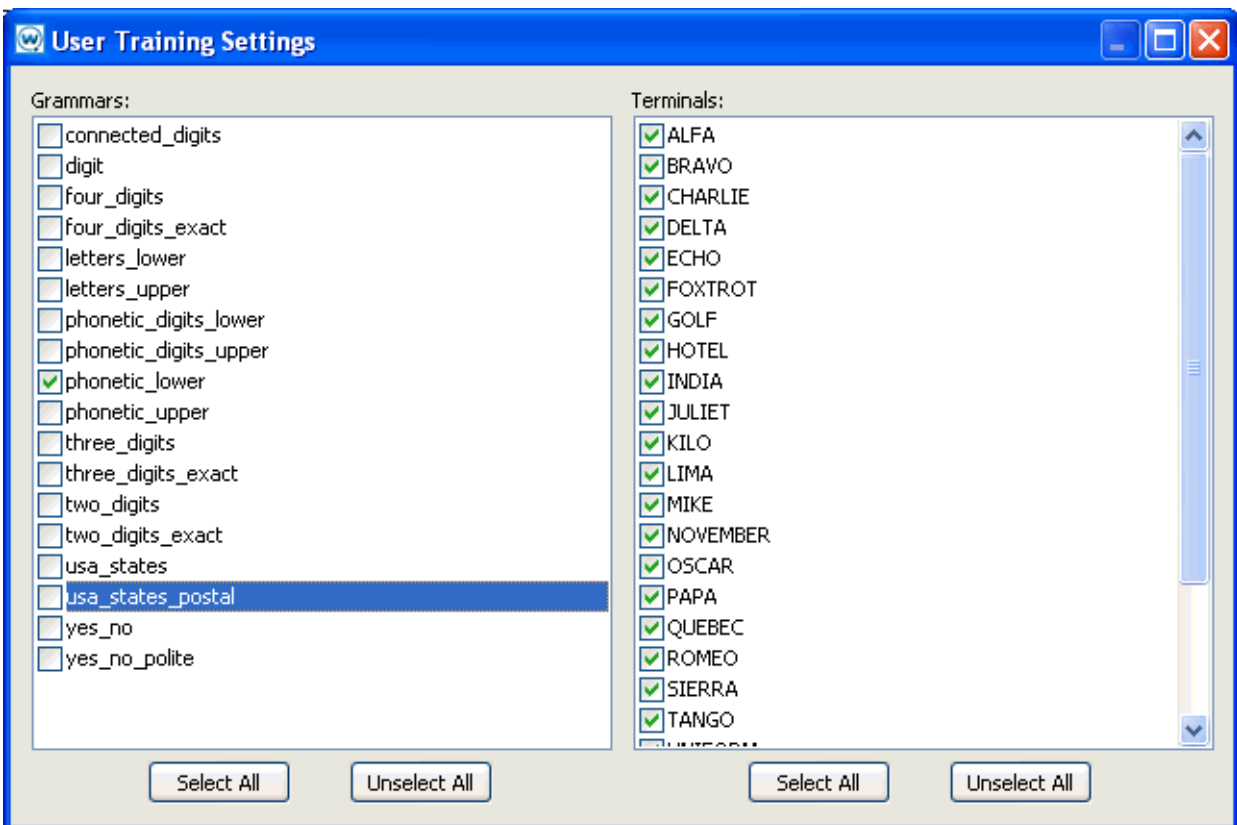
Once you have put the terms in a group and specified the group using the !slot command, use the Grammar File Manager to select the terms for training before the package is deployed to the device.

SPECIFYING VOICE PROFILE TRAINING OPTIONS

When you are selecting words and phrases to use for training, focus on terms that are short or that the engine may have trouble understanding. If you have two words that may sound similar or words that are only one syllable, you may want to include these in the training.

To specify the words used for voice profile training:

5. Launch the Grammar File Manager.
6. Click **Training Settings**.



User Training Settings dialog box

7. The *User Training Settings* dialog box appears. From the Grammar list, select at least one grammar that has words or phrases that you want to use for training.

When you have selected a grammar, the words and phrases associated with that grammar appear in the Terminals list.

8. Enable the checkboxes for the terms that you want to use for training.
9. When you have selected all the terms you want to use for training, click the red **X** to close the dialog box. The user will be prompted to train for the selected terms when a voice profile is created or when a grammar is available that a user has not yet trained for.

CREATING A VOICE PROFILE

A voice profile provides the Speakeasy engine with speech samples in order to get more positive results during speech-to-text. You can create a voice profile from the TE Client after Speakeasy is installed. Each voice profile is stored locally on the device. If you are using an Avalanche Enabler and mobile device server, voice profiles are also archived on the mobile device server. If you enter the same username on a different device, the TE Client will automatically retrieve the voice profile from the mobile device server and use it.

Once you have created a voice profile, use either the TE Client menu option or a script to implement the profile. When you provide the username, Speakeasy will check to see if a profile has been created for that username. If you have already created the user and performed user training, the TE Client will use the profile associated with the username.

If you have not yet performed user training, Speakeasy will vocally prompt you to say the words and phrases selected for user training when the grammar files were configured. The user will be prompted to say each word or phrase twice. After all the selected terms have been recorded, the profile is saved.

If you create a voice profile and later add a grammar file that requires additional training, you will be prompted to complete the training for that grammar file when you use it.

To use a script to switch to an existing profile:

The following example script prompts the user for a username as soon as the connection to the host is made. If the profile does not exist yet, Speakeasy will create a new profile with the username and begin user training for the profile.

```
Script( Set_Speech_User )
String( sStt_User )
Activate( Connection )

sStt_User = Ask_String_Lowercase( "What is your Speech Username?", "Speech",
1, 100, "" )

Speech_To_Text_Change_User_Name( sStt_User )
Return
```

To create a profile or switch to an existing voice profile using the TE Client menu:

1. Ensure that your headset is connected.
2. From the TE Client, click **Options > Configure > Microphone**.

3. The *Options* dialog box appears. Click **User Training**.
4. The *Language* dialog box appears. Select the language you want to use from the drop-down menu and click **OK**.
5. The *User Name* dialog box appears. Type the user name in the text box and click **OK**.
6. If you have already created the user and performed user training, the TE Client will use the profile associated with the username.

-Or-

If you have not yet performed user training, Speakeasy will vocally prompt you to say the words and phrases selected for user training when the grammar files were configured. The user will be prompted to say each word or phrase twice. After all the selected terms have been recorded, the profile is saved.



Wavelink Corporation
USA and Canada: 1.888.697.WAVE (9283)
Outside the USA and Canada: + 800 WAVELINK (9283 5465)
CustomerService@wavelink.com

