



IMPORTING AVALANCHE MANAGER 3.6 BACKUP FILES TO AVALANCHE MC OR SE

This document provides instructions for migrating to Avalanche SE or MC.

This document provides instructions for migrating Avalanche Manager 3.6 data to Avalanche MC or Avalanche SE.

OVERVIEW

This document contains the following sections:

- Overview
- Backing Up the Avalanche Agent
- Installing Avalanche
- Importing Backup Data to Avalanche MC or SE
- Document History

OVERVIEW

When you migrate from Avalanche Manager 3.6 to the current version of Avalanche MC or SE you perform three tasks:

1. **Back up Avalanche Manager Agents.** Create backup files for all your Avalanche Agent configurations to import into your new Avalanche installation.
2. **Install Avalanche SE or MC..**
3. **Import the backup file data.** The Import Data utility allows you to import the Avalanche Manager backup files to Avalanche.

This document provides information about the following tasks:

- Backing Up the Avalanche Agent
- Installing Avalanche
- Importing Backup Data to Avalanche MC or SE
- Components Migrated

NOTE: In older versions Avalanche, the Mobile Device Server was called the Avalanche Agent.

BACKING UP THE AVALANCHE AGENT

Backing up the Avalanche 3.6 Agent backs up all configuration information associated with the Agent. Using the backup file, you can quickly duplicate the system configuration on the Mobile Device Server in a new version of Avalanche. The system configuration is backed up to the current Agent and then to a file on the local machine with an `.abk` extension.

NOTE: Before creating the Avalanche 3.6 Agent backup files, make sure that none of your device groups have the same name.

To back up the system configurations for the Avalanche Agent:

1. Launch Avalanche Manager 3.6.
2. Connect to the Agent containing the system configuration you want to back up.



3. From the **File** menu, select **Backup/Restore Agent**.

The *Avalanche Agent Backup/Restore* wizard appears.



Select the Backup/Restore Options

4. Select the **Make an agent backup** option and click **Next**.

The *Select the Backup Content* dialog box appears.

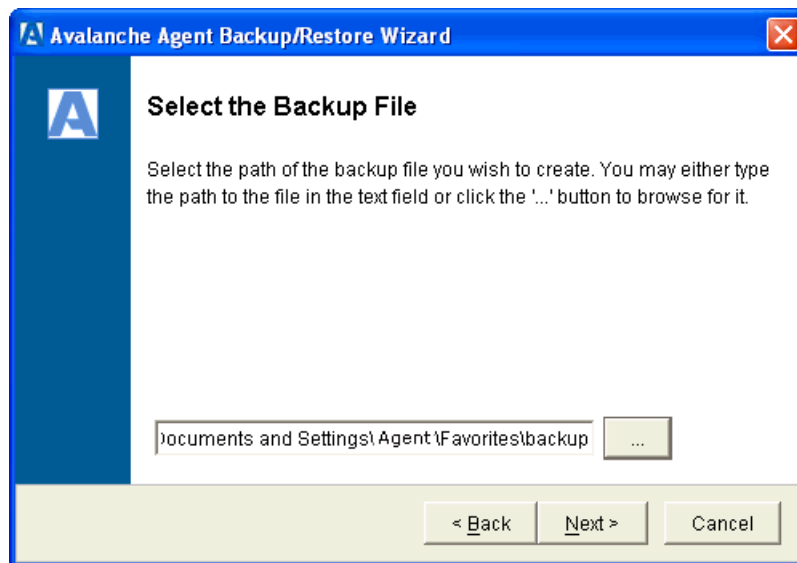


Select the Backup Content

5. Click **Select All** to migrate all content and then click **Next**.

NOTE: A full backup is required for migration. If you do not select all the content, the migration will fail.

The *Select the Backup File* dialog box appears.



Select the Backup File

6. Enter the full path where the backup file will be stored, or click [...] to browse to a location. When you are finished, click **Next**.

A backup of the Avalanche Agent is created in the specified directory.

7. Click **Finish**.

You can now install Avalanche and migrate the Avalanche Agent settings.

INSTALLING AVALANCHE

Refer to the *Avalanche User Guide* (MC or SE) for complete information about installing the new version of Avalanche.

IMPORTING BACKUP DATA TO AVALANCHE MC OR SE

Once you install Avalanche MC or SE, you can import Avalanche Manager 3.6 backup files (.abk files) using the Import Data utility. This tool imports Network Profiles, Software Collections, Mobile Device Groups and the client database from the backup file into Avalanche.

When you import a backup file, the information merges with any other information you have already configured in Avalanche.

The import tool only works with Avalanche Manager 3.6 backup files. To import data from previous versions of Avalanche Manager, you must migrate to Avalanche Manager 3.6 and create the backup file from there.

Once you complete the import, the Mobile Device Server will be alerted of the console changes.

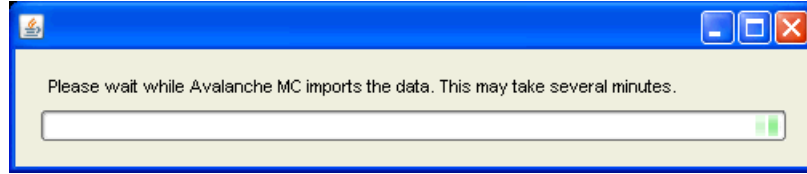
To import a backup file:

1. Launch the Avalanche Console.
2. From the **File Menu**, select **Import Data**.

An *Open* dialog box appears.

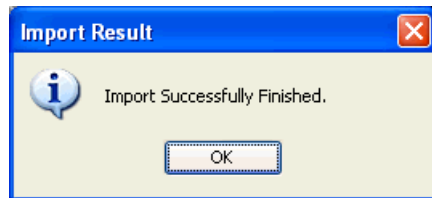
3. Navigate to the location of the `.abk` file and select **Open**.
4. Once you select the file, click **OK** to begin the import.

A status dialog box appears.



Importing Status

When the import is complete, the *Import Result* dialog box appears indicating whether the import was successful.



Import Result

5. Click **OK** to close the dialog box.

The data from the backup file has been imported to Avalanche and the database.

COMPONENTS MIGRATED

The following table provides information about the components that are migrated from the Avalanche Manager 3.6 backup file to Avalanche MC or SE. The first column lists the Avalanche Manager 3.6 components. The second column lists what those components migrate to in Avalanche MC or SE.

Avalanche Manager 3.6 Component	Migrated to:
Enterprise License	Enterprise License
License file (wavelink.lic)	License file (wavelink.lic) The License file in Avalanche Manager will only be applied to the local Mobile Device Server and will not appear in the license server. Contact Wavelink Customer Service at 1-888-697-9283 for more information.
Network Profile	Network Profile Network Profiles will appear in the Network Profiles tab and automatically be assigned to the My Enterprise level. Any profiles that were enabled in Avalanche Manager will be deployed and active immediately.
Software Collections	Software Profiles Software Profiles will appear in the Software Profiles tab with the same names and settings as were configured in Avalanche Manager.
Mobile Device Groups	Mobile Device Groups Static Device Groups will not automatically contain mobile devices for the group. You will need to add matching devices to the group from the <i>Properties</i> dialog box for that mobile device group. The system will contact the Mobile Device Server and pull the devices that match the static group into the group. For information about adding matching devices to a mobile device group, refer to the <i>Avalanche User Guide</i> (MC or SE).
Mobile Device Inventory	Mobile Device Inventory

NOTE: The `mdinf.dat` file contains the list of all your mobile devices in Avalanche Manager 3.6 does not populate the new Avalanche database. Therefore your Mobile Device Inventory list in the console will not be populated with the mobile devices from the backup file until the first time the mobile devices contact the console.

DOCUMENT HISTORY

- Document created. 06/01/2009.



6985 Union Park Center
Suite 335
Midvale, UT 84047-4155
Main: 801.316.9000

www.wavelink.com



Importing Backup Files to Avalanche MC or SE 05