

# AVALANCHE 6.0 SYSTEM REQUIREMENTS

Avalanche has different models for installation, and the installation requirements are dependent on the installation type, the configuration model, and the number of devices to be supported. This section lists both minimum and recommended system requirements. The minimum system requirements allow for the OS, but not for other applications running on the same system. As with any application, performance, speed, and system responsiveness will generally improve with additional RAM, processing power, and higher clock speed.

Avalanche 6.0 can be installed on the following operating systems:

- Windows Server 2008 R2
- Windows Server 2012 R2

Avalanche 6.0 can use the following database platforms:

- SQL Server 2008
- SQL Server 2012

You must have SQL Server installed before you begin installing Avalanche. The Avalanche installer will prompt you for the instance location and create the databases.

If you install the Express edition of SQL Server, you must use Microsoft SQL Server Express with Tools. To install this, you will need to enable .NET Frameworks 3.5, which is included on Windows Server 2008 R2. If you are using Windows Server 2012 R2, .NET Frameworks 3.5 must be installed separately. For guided installation instructions, see the [Microsoft Developer Network](#).

Avalanche is installed using either a centralized model or a distributed model, depending on if you want the servers installed together or separately.

- [Centralized Model Requirements](#)
- [Distributed Model Requirements](#)

Once you have installed Avalanche, access the Avalanche Console using a web browser. To access the Console, you need Internet Explorer 9 or 10, or the latest version of Chrome. You must also have an Internet or intranet connection between the Avalanche server and the

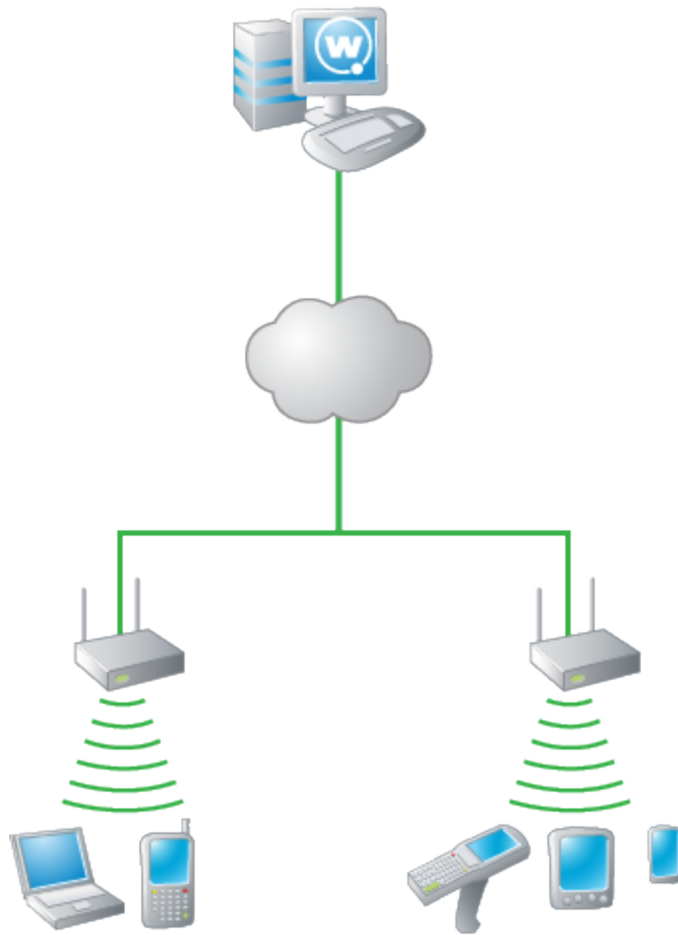


computer where you will be using the Console, and each user who will use the Console to configure software packages must have a JRE installed.

## CENTRALIZED MODEL REQUIREMENTS

In a centralized model, the Avalanche services are installed on a single computer. If requirements change, this model can be changed to a distributed model by deploying additional Mobile Device Servers. It is not necessary to uninstall or reinstall Avalanche.





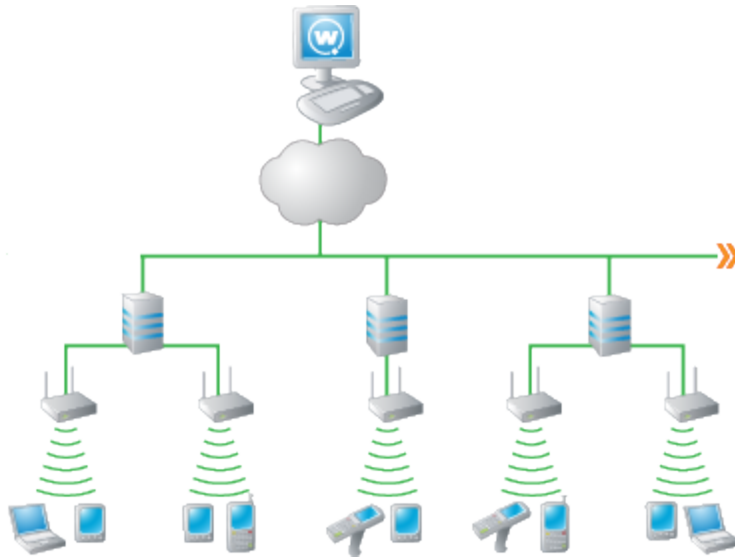
<b>Enterprise Server with Mobile Device Server and Smart Device Server</b>	<b>1-1,500 Devices</b>
CPU	Quad Core at 2.8 GHz or greater
RAM (minimum) (recommended)	8 GB 16 GB
Disk Space	100 GB

<b>Enterprise Server with Mobile Device Server</b>	<b>1-1,000 Devices</b>	<b>1,000-5,000 Devices</b>
CPU	Dual Core at 2.8 GHz or greater	Quad Core at 3.2 GHz or greater
RAM (minimum) (recommended)	2 GB 4 GB	4 GB
Disk Space	100 GB	200 GB

## DISTRIBUTED MODEL REQUIREMENTS

When Avalanche is installed using a distributed model, device servers are installed on different computers. These servers can be side by side in the same server farm or across the enterprise.





Web Server	Hardware Requirements
CPU (minimum) (recommended)	Intel Core i5 Intel Core i7
RAM (minimum) (recommended)	4 GB 8 GB
Disk Space (minimum) (recommended)	100 GB 200 GB

Enterprise Server	1-10,000 Devices	10,000-50,000 Devices	50,000-100,000 Devices
CPU	Dual Core at 2.8 GHz or greater	Quad Core at 3.0 GHz or greater	Quad Core at 3.5 GHz or greater
RAM (minimum) (recommended)	4 GB 8 GB	4 GB 8 GB	8 GB 16 GB or more
Disk Space	100 GB	150 GB	200 GB

<b>Mobile Device Server</b>	<b>1-1,000 Devices</b>	<b>1,000-5,000 Devices</b>	<b>5,000-10,000 Devices</b>
CPU	Single Core at 2.8 GHz or greater	Dual Core at 2.5 GHz or greater	Dual Core at 3.2 GHz or greater
RAM (minimum)	2 GB	4 GB	4 GB
(recommended)	4 GB	8 GB	8 GB
Disk Space	50 GB	50 GB	50 GB

<b>Smart Device Server</b>	<b>1-5,000 Devices</b>	<b>5,000-10,000 Devices</b>
CPU	Intel Core i5	Intel Core i7
RAM	4 GB	8 GB
Disk Space	50 GB	100 GB



Wavelink Corporation  
 USA and Canada: 1.888.697.WAVE (9283)  
 Outside the USA and Canada: + 800 WAVELINK (9283 5465)  
[www.wavelink.com](http://www.wavelink.com)

