

Wavelink Client License Server Version 3.0 Reference Guide

wltn-rg-licserv-20060511-01

Revised 5/22/06

Wavelink Corporation
6985 South Union Park Avenue, Suite 335
Midvale, Utah 84047
Telephone: (801) 316-9099
Fax: (801) 255-9699
Email: customerservice@wavelink.com
Website: <http://www.wavelink.com>

Email: sales@wavelink.com

No part of this publication may be reproduced or used in any form, or by any electrical or mechanical means, without permission in writing from Wavelink Corporation. This includes electronic or mechanical means, such as photocopying, recording, or information storage and retrieval systems. The material in this manual is subject to change without notice.

The software is provided strictly on an "as is" basis. All software, including firmware, furnished to the user is on a licensed basis. Wavelink grants to the user a non-transferable and non-exclusive license to use each software or firmware program delivered hereunder (licensed program). Except as noted below, such license may not be assigned, sublicensed, or otherwise transferred by the user without prior written consent of Wavelink. No right to copy a licensed program in whole or in part is granted, except as permitted under copyright law. The user shall not modify, merge, or incorporate any form or portion of a licensed program with other program material, create a derivative work from a licensed program, or use a licensed program in a network without written permission from Wavelink. The user agrees to maintain Wavelink's copyright notice on the licensed programs delivered hereunder, and to include the same on any authorized copies it makes, in whole or in part. The user agrees not to decompile, disassemble, decode, or reverse engineer any licensed program delivered to the user or any portion thereof.

Wavelink reserves the right to make changes to any software or product to improve reliability, function, or design.

The information in this document is bound by the terms of the end user license agreement.

Table of Contents

Introduction	3
Document Conventions	3
About the License Server	4
Wavelink Client License Server Version 3.0 Enhancements	5
Installing the License Server.....	5
Installation Requirements	5
Using the License Server.....	7
Launching the License Server	7
Adding a License	8
Releasing a License	10
Removing a License	10
Viewing License Information	11
Index	13

Wavelink Client License Server Version 3.0

This document provides information about the Wavelink Client License Server, including enhancements to version 3.0. The following information is included:

- [Introduction](#)
- [Installing the License Server](#)
- [Using the License Server](#)

Introduction

This section provides information about document conventions and gives an overview of the Wavelink Client License Server.

Document Conventions

The following section contains information about text-formatting conventions in this manual.

Table 1 lists the conventions that are used in this manual.

Convention	Description
<code>courier new</code>	<p>Any time you interact directly with text-based user interface options, such as a button, or type specific information into a text box, such as a file pathname, that option appears in the <code>Courier New</code> text style. This text style is also used for keys that you press, filenames, directory locations, and status information.</p> <p>For example:</p> <p>Press <code>ENTER</code>.</p> <p>Click <code>OK</code>.</p>

Table 1: *Text-Formatting Conventions*

Convention	Description
bold	<p>Any time this document refers to a labelled user interface option, such as descriptions of the choices in a dialog box, that option appears in the Bold text style.</p> <p>Examples:</p> <p>Enable the DHCP checkbox.</p> <p>Access the Telnet Client Session menu.</p>
<i>italics</i>	<p>Italicized text is used to indicate the name of a window or dialog box.</p> <p>For example:</p> <p>The <i>Update Utility</i> dialog box.</p> <p>The <i>Profile Manager</i> dialog box.</p>

Table 1: *Text-Formatting Conventions*

About the License Server

The Wavelink Client License Server is a Windows-based application that provides licenses to mobile devices that are using Telnet Client. The Telnet Client allows you to store licenses at a central location and automatically distribute those licenses to mobile devices that request them.

NOTE Licenses can also be manually added to individual mobile devices.

Telnet Client licenses are distributed to mobile devices in the following manner:

- 1 When the Telnet Client application is first activated on a mobile device, the mobile device broadcasts a request for a license.
- 2 The License Server responds to the mobile device with a license.
- 3 The mobile device accepts the license and responds to the License Server.
- 4 Once a mobile device obtains a license, it keeps the license until one of the following criteria are met:
 - The license expires.
 - The Telnet Client discovers that another mobile device is using the same license.

When either of these criteria are met, the Telnet Client discards the license and requests a new license from the License Server.

Wavelink Client License Server Version 3.0 Enhancements

There are several new features and changes to existing features of the License Server, including:

- **Installation Wizard.** This feature provides a convenient installation process for the License Server.
- **Windows Service.** This feature allows the License Server to run as a Windows service, rather than an application.
- **Detection.** This feature enables the License Server to detect any License Server programs already running on the same network.

Installing the License Server

This section provides information about installing the Wavelink Client License Server as a Windows service. When you use this method, the Wavelink Client License Server runs as a dedicated Windows service on the host system. This allows the License Server to automatically start every time the host system is rebooted. It also allows the License Server to operate without requiring a Windows login.

NOTE If you choose to install the License Server as a standard application instead of a service, it will distribute licenses only while the GUI is running.

Installation Requirements

Ensure that the system on which you will install the Wavelink Client License Server meets the following specifications:

- Microsoft Windows 2000/XP or Windows Server
- 1MB hard disk space
- Network connection that provides bi-directional communication with Telnet Clients that will receive licenses from the License Server

NOTE You must be logged into the computer on an account with Administrator privileges to run the installer.

To install the License Server as a Windows service:

- 1 Open the License Server 3.0 application.

The *Wavelink Client License Server Setup* dialog box appears.

- 2 Click `Next`.

The *License Agreement* dialog box appears.

- 3 Review the License Agreement and click `I Agree` to continue.

NOTE You must accept the License Agreement to install the License Server.

The *Choose Install Location* dialog box appears.

- 4 Select the folder in which you want to install the License Server.
- 5 Click `Install`.

A dialog box appears asking if you want the License Server to run as a Windows service.

- 6 Click `Yes`.

A dialog box appears asking if you want to add a shortcut to the desktop.

- 7 Choose either `Yes` or `No`.

The *Completing the Wavelink Client License Server Setup Wizard* dialog box appears.

- 8 If you want to run the License Server immediately, enable the **Run Wavelink Client License Server** checkbox.
- 9 If you want to view information about the License Server, enable the **Show Readme** checkbox.
- 10 Click `Finish`.

The License Server installation is complete.

Using the License Server

This section provides information about using the Wavelink Client License Server, including:

- [Launching the License Server](#)
- [Adding a License](#)
- [Releasing a License](#)
- [Removing a License](#)
- [Viewing License Information](#)

Launching the License Server

Launch the License Server to access the GUI that will allow you to add, remove, and view licenses.

The following are important notes about running the License Server:

- Only one instance of a License Server may be running on the network. If you launch the License Server and another License Server is running, you will receive an error message.
- If you are running the License Server as a Windows service, the service will be notified of any changes made in the GUI.

To launch the License Server:

- Click on the `License Server` desktop icon or the `License Server` icon in the **Wavelink Client License Server** program group.

The License Server GUI appears.

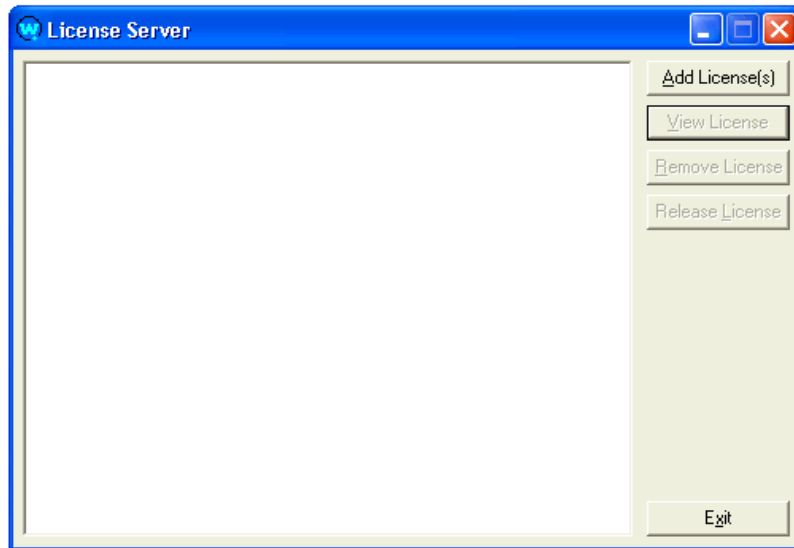


Figure 1. *License Server GUI*

Adding a License

You can add a license to the License Server that the License Server can then distribute to mobile devices running the Telnet Client.

To add a license:

- 1** Launch the License Server GUI.
- 2** Click Add Licenses.

The *Wavelink Authorization* dialog box appears.

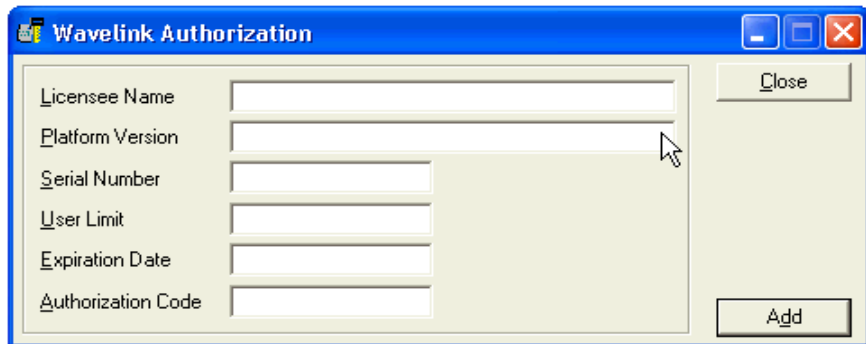


Figure 2. *Wavelink Authorization Dialog Box*

3 In the *Wavelink Authorization* dialog box, input the information for the license, where:

- **Licensee Name** is the name of the party to which the license was distributed. (The licensee name is case sensitive.)
- **Platform Version** is the list of emulation types that the license supports. (The platform version is case sensitive.)
- **Serial Number** is the serial number of the license.
- **User Limit** is the number of users that the license supports.
- **Expiration Date** is the expiration date of the license in the format MMDDYYYY.
- **Authorization Code** is the authorization code for the license. (The authorization code is case sensitive.)

4 After you have input the license information, click `Add`.

A dialog box appears that indicates that the license was successfully added as shown.

5 Click `OK`.

6 Click `Close` to exit the *Wavelink Authorization* dialog box.

The license now appears in the License Server GUI.

- 7 Expand the license to view how many of the user spaces in the license are in use.

NOTE Licenses that are in use display the MAC address of the mobile device that acquired the license.

Releasing a License

You can use the License Server GUI to release a license and make it available for the License Server to distribute to another device. However, this does not immediately force the device that holds the license to release it; you must first make sure that the mobile device that previously acquired the license is not operating on the network.

To release a license:

- 1 Access the License Server GUI.
- 2 Locate the license that you want to release.
- 3 Click `Release License`.

The *LicenseServer* dialog box appears.

- 4 Click `Yes`.

The License Server GUI now indicates that the client license is unassigned and can be distributed to another mobile device.

Removing a License

If a license is no longer needed, you may remove it from the License Server.

To remove a license from the License Server:

- 1 Access the License Server GUI.
- 2 From the list of licenses that are installed, select the license that you want to remove.
- 3 Click `Remove License`.

The *LicenseServer* dialog box appears and requests confirmation of the deletion.

- 4 Click `Yes`.

The license is deleted from the License Server and removed from the License Server GUI.

Viewing License Information

You can use the License Server GUI to view information about a license or verify the version number of the License Server.

To view information about a license:

- 1 Access the License Server GUI.
- 2 From the list of installed licenses, select the license that you want to view.
- 3 Click `View License`.

The *ViewLicense* dialog box appears and displays the details of the license.

- 4 Click `Close` to close the *ViewLicense* dialog box.

To view the License Server version:

- 1 Launch the License Server application.
- 2 Right-click the title bar of the License Server window.

A menu list appears.

- 3 Select `About License Server....`

The *About License Server* dialog box appears. This dialog box displays the License Server version number.

Index

A

about License Server 4
adding licenses 8

D

document conventions 3

E

enhancements 5

I

installation requirements 5
installing License Server 5
introduction 3

L

launching License Server 7
License Server 3.0
 about 5
 enhancements 5
licenses
 adding 8
 releasing 10
 removing 10

R

releasing licenses 10
removing licenses 10

U

using License Server
 adding licenses 7
 launching 7
 releasing licenses 7
 removing licenses 7

V

viewing
 license information 11

version number 11

