



MIGRATING FROM AVALANCHE MANAGER 3.6X TO AVALANCHE MC 4.2

This document provides instructions for migrating to Avalanche MC 4.2.

This document provides instructions for migrating Avalanche Manager to Avalanche Mobility Center 4.2.

OVERVIEW

This document contains the following sections:

- Overview
- Backing Up The Avalanche Agent
- Migrating to Avalanche MC 4.2 Site
- Migrating to Avalanche MC 4.2 Enterprise
- Document History

OVERVIEW

When you migrate from Avalanche Manager to Avalanche Mobility Center (Avalanche MC) you perform two main tasks:

1. **Back up Avalanche Agents.** Create backup files for all your Avalanche Agent configurations to import into Avalanche MC. Before migrating to Avalanche MC, backup your Avalanche Agent from Avalanche Manager. You can then run the Avalanche MC installer, during which you are asked to import the backup file from Avalanche Manager. The Avalanche MC installation migrates those saved components to Avalanche MC 4.2.
2. **Install Avalanche MC (Site or Enterprise versions).** Install the Site version of Avalanche if you want to import a single Avalanche Agent backup and continue using the site-only functionality. Install the Enterprise version if you have more than one Avalanche Agent backup file that you need to import or if you plan on using the Enterprise functionality.

This document provides information about the following tasks:

- Backing Up The Avalanche Agents
- Migrating to Avalanche MC 4.2 Site
- Migrating to Avalanche MC 4.2 Enterprise
- Document History

NOTE: In Avalanche Manager, the Mobile Device dServer is referred to as the Avalanche Agent. When referring to Avalanche Manager in this document, the component is called the Avalanche Agent. When referring to Avalanche MC, the component is called the Mobile Device dServer.

BACKING UP THE AVALANCHE AGENT

Backing up the Avalanche Agent backs up all configuration information associated with the Agent. Using the backup file, you can quickly duplicate the system configuration on the Mobile Device dServer in Avalanche MC. The system configuration is backed up to the current Agent, and then to a file on the local machine with an .ABK extension.

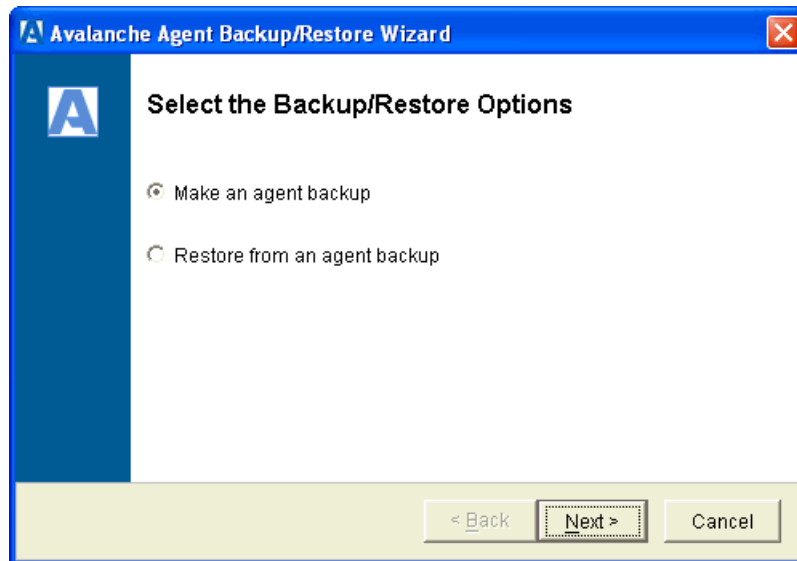
NOTE: Before creating the Avalanche Agent backup files, make sure that none of your device groups have the same name.

To back up the system configurations for the Avalanche Agent:



1. Launch Avalanche Manager.
2. Connect to the Agent containing the system configuration you want to back up.
3. From the **File** menu, select **Backup/Restore Agent**.

The *Avalanche Agent Backup/Restore* wizard appears.



Select the Backup/Restore Options

4. Select the **Make an agent backup** option and click **Next**.

The *Select the Backup Content* dialog box appears.

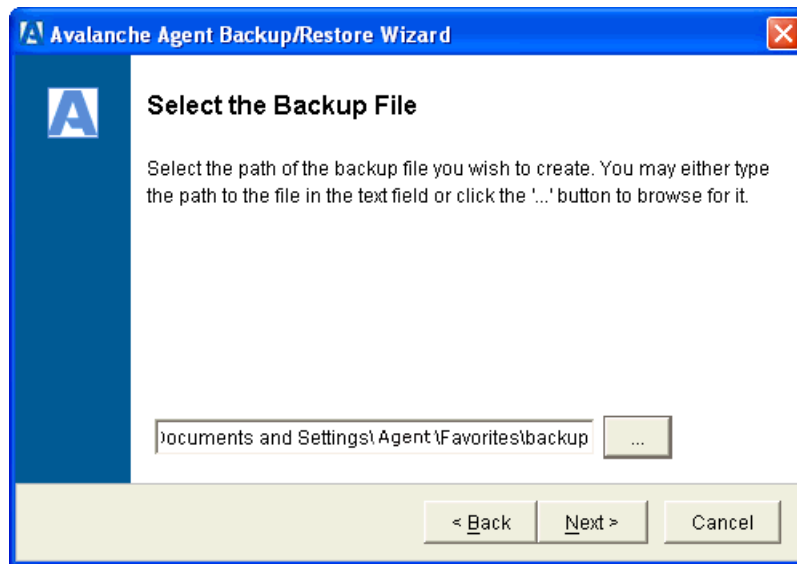


Select the Backup Content

5. Click **Select All** to migrate all content and then click **Next**.

NOTE: A full back up is required for migration. If you do not select all the content, the migration will fail.

The *Select the Backup File* dialog box appears.



Select the Backup File

6. Enter the full path where the backup file will be stored, or click [. . .] to browse to a location. When you are finished, click **Next**.

A backup of the Avalanche Agent is created in the specified directory.

7. Click **Finish**.

You can now install Avalanche MC and migrate the Avalanche Agent settings.

MIGRATING TO AVALANCHE MC 4.2 SITE

Use this process to install Avalanche MC 4.2 Site and import only one Avalanche Agent backup file. If you are importing more than one backup file, you need to install the Enterprise version. Refer to "Migrating to Avalanche MC 4.2 Enterprise" on page 7 for more information.

NOTE: Although it is not required, Wavelink recommends that you uninstall Avalanche Manager before installing Avalanche MC 4.2.

During the installation process you are prompted to locate your Avalanche Agent backup file so that the information can be migrated to Avalanche MC. After the installation is complete, a log file called `site_migration.log` is placed in the default installation directory. This log file contains details of the migration and the components migrated.

Once you install Avalanche MC 4.2, you may need to obtain new licensing based on your Mobile Device licenses. Contact Wavelink Customer Service at 1-888-697-9283 for more information.

To install Avalanche MC Site:

1. Download the self-extracting zip file from the [Wavelink Web site](#).
2. Double-click the file to start the installation process.

A *Welcome* dialog box appears.

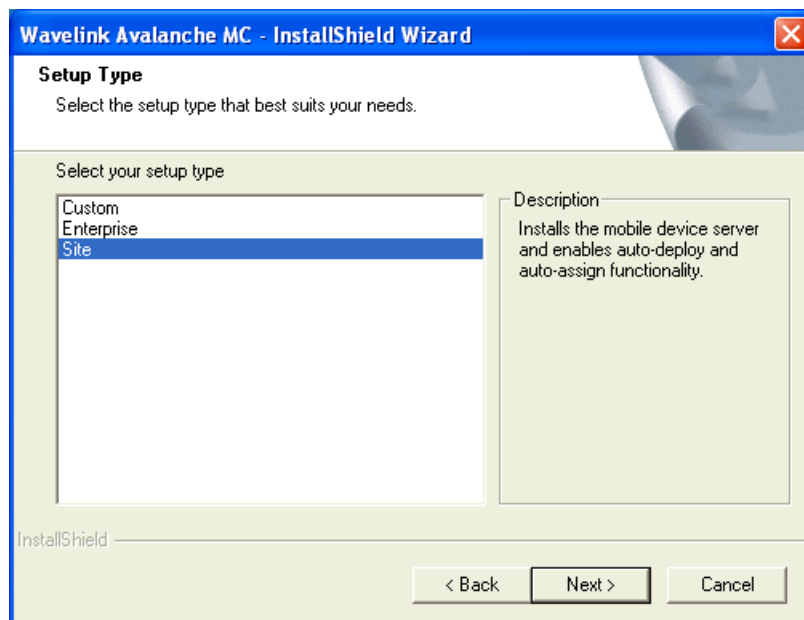
3. Click **Next** to continue the installation process.

The *License Agreement* dialog box appears.

4. If you agree with the terms of the License Agreement, click **Yes**.

NOTE: If you do not click **Yes**, you will not be able to complete the installation process.

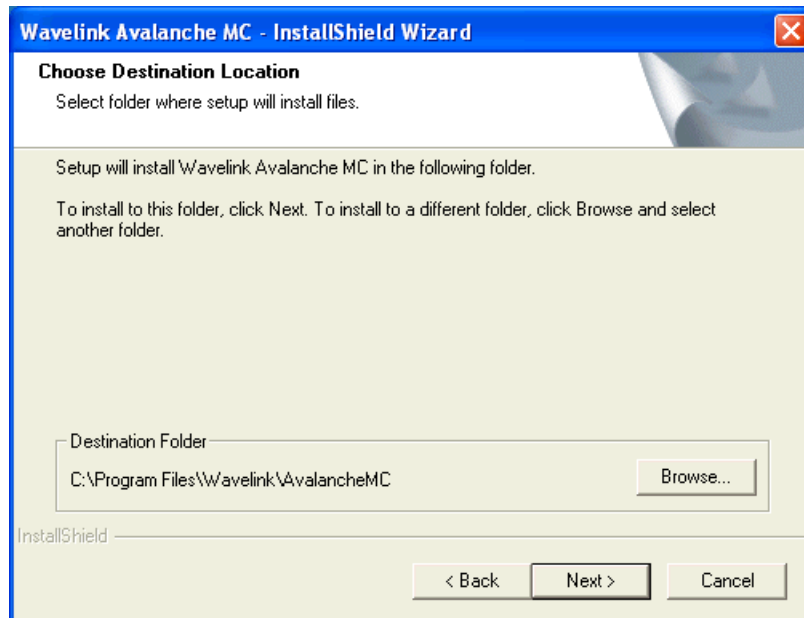
The *Setup Type* dialog box appears.



Setup Type

5. Select **Site** and click **Next**.

The *Choose Destination Location* dialog box appears.



Choose Destination Location

6. Click **Next** to accept the default installation folder, or click **Browse** to navigate to a folder of your choice. After you select an installation folder, click **Next** to continue the installation process.

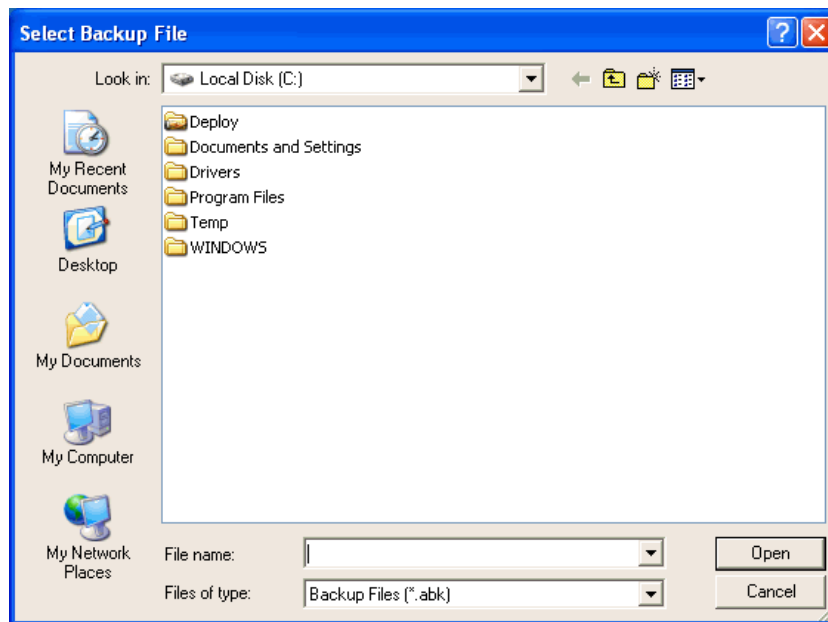
The Avalanche MC begins the installation process. A *Question* dialog box appears asking if you have an Avalanche Site backup file that you want to migrate.



Question

7. Click **Yes**.

The *Select Backup File* dialog box appears.



Select Backup File

8. Navigate to the location of your saved Agent backup and click **Open**.

The information from the backup file is migrated to the Avalanche MC. The migration may take a few minutes depending on the size of the backup file.

9. When the installation is complete, click **Finish**.

Once the installation is complete, you should activate Avalanche MC for your network. For more information about activating Avalanche MC, refer to *Wavelink Avalanche Mobility Center User's Guide*.

SITE COMPONENTS MIGRATED

The following table provides information about the components that are migrated from Avalanche Manager to Avalanche MC 4.2 Site. The first column lists the Avalanche Manager components. The second column lists what those components migrate to in Avalanche MC.

Avalanche Manager Component	Migrated to:
Enterprise License	Enterprise License
License file (wavelink.lic)	License file (wavelink.lic) The License file in Avalanche Manager will only be applied to the local dServer and will not appear in the license server. Contact Wavelink Customer Service at 1-888-697-9283 for more information.
Network Profile	Network Profile Network Profiles will appear in the Network Profiles tab and automatically be assigned to the My Enterprise level. Any profiles that were enabled in Avalanche Manager will be deployed and active immediately.
Software Collections	Software Profiles Software Profiles will appear in the Software Profiles tab with the same names and settings as were configured in Avalanche Manager.
Mobile Device Groups	Mobile Device Groups Static Device Groups will not automatically contain mobile devices for the group. You will need to add matching devices to the group from the <i>Properties</i> dialog box for that mobile device group. The Eserver will contact the Mobile Device Server and pull the devices that match the static group into the group. For information about adding matching devices to a mobile device group, refer to the <i>Avalanche Mobility Center User's Guide</i> .
Mobile Device Inventory	Mobile Device Inventory

MIGRATING TO AVALANCHE MC 4.2 ENTERPRISE

If you have more than one Avalanche Agent backup file or if you plan on expanding your system and want to use the Enterprise functionality, install the Enterprise version of Avalanche MC. The migration process is similar to the Site migration process, but once you are finished installing Avalanche MC, you can import all the Avalanche Agent backup files.

There are two parts of migrating from Avalanche Manager to Avalanche MC Enterprise:

- Installing Avalanche MC 4.2
- Importing Backup Files

INSTALLING AVALANCHE MC 4.2

Before you install Avalanche MC, you should create backup files for your Avalanche Manager Agents. For information about creating Avalanche Agent backup files, refer to "Backing Up The Avalanche Agent" on page 1.

To install Avalanche MC Enterprise:

1. Download the self-extracting zip file from the [Wavelink Web site](#).
2. Double-click the file to start the installation process.

A *Welcome* dialog box appears.

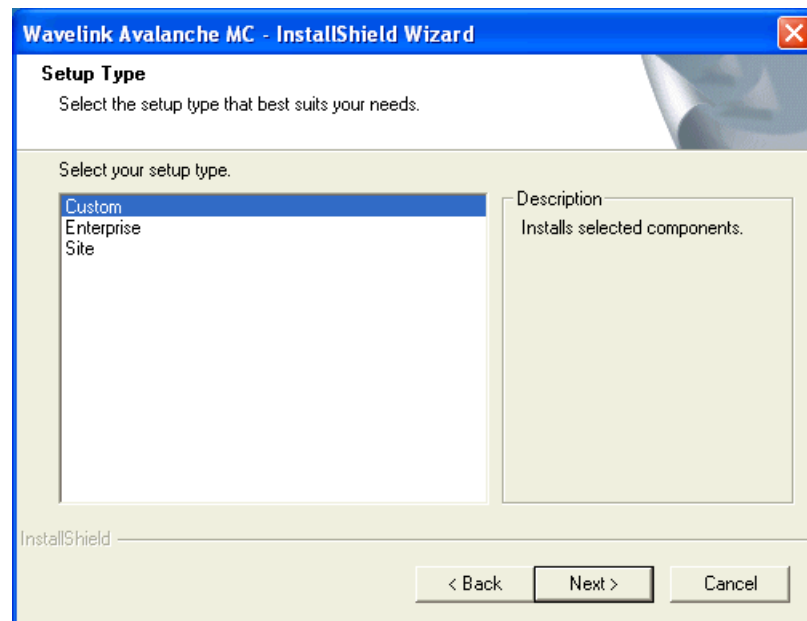
3. Click **Next** to continue the installation process.

The *License Agreement* dialog box appears.

4. If you agree with the terms of the License Agreement, click **Yes**.

NOTE: If you do not click **Yes**, you will not be able to complete the installation process.

The *Setup Type* dialog box appears.



Setup Type

5. Select **Enterprise** and click **Next**.

The *Choose Destination Location* dialog box appears.

6. Click **Next** to accept the default installation folder, or click **Browse** to navigate to a folder of your choice. After you select an installation folder, click **Next** to continue the installation process.

Avalanche MC begins the installation process.

7. When the installation is complete, click **Finish**.

Once the installation is complete, you should activate Avalanche MC for your network. For more information about activating Avalanche MC, refer to *Wavelink Avalanche Mobility Center User's Guide*.

IMPORTING BACKUP FILES

Once you have installed the patch files you can run the `.bat` file that imports the Avalanche Agent backup files.

NOTE: Ensure you know the location of your backup files.

When you run the `.bat` file, you can specify a current region to which you want to import the `.abk` files or the `site_import.bat` file will automatically create a region for the backup files.

NOTE: If you decide to import the `.abk` file information to an existing region, ensure that the region has no sites deployed.

The region name you enter appends to all software collections and network profiles that are imported, for example: `region name_network profile`.

For site installations, all migrated information is added to the My Enterprise level, as well as the region name you specify when you run the `.bat` file.

To import .abk files:

1. Open a command prompt.
2. Navigate to the location of the `site_import.bat` file. The default location is `C:\Program Files\Wavelink\AvalancheMC\Tools`.
3. Run the batch file:

```
site_import.bat [region name] [path to .abk file]
```

NOTE: If you are creating a new region, name the region any name you prefer. If you are importing the information into an existing region, enter the region name.

The information from the `.abk` files imports to the Avalanche MC console and the database. Once the update is complete, perform a Universal Deployment to alert the Mobile Device and Infrastructure Servers of the console changes. The first time you view any of the backup profiles or regions, you will be asked to save.

ENTERPRISE COMPONENTS MIGRATED

The following table provides information about the components that are migrated from Avalanche Manager to Avalanche MC 4.2 Enterprise. The first column lists the Avalanche Manager components. The second column lists what those components migrate to in Avalanche MC.

Avalanche Manager Component	Migrated to:
Enterprise License	Enterprise License
License file (wavelink.lic)	License file (wavelink.lic) The License file in Avalanche Manager will only be applied to the local dServer and will not appear in the license server. If a new region was created when the migration was executed, the license file is lost. Contact Wavelink Customer Service at 1-888-697-9283 for more information.
Network Profile	Network Profile Network Profiles will appear in the Network Profiles tab and automatically be assigned to the My Enterprise level. Any profiles that were enabled in Avalanche Manager will be deployed and active immediately.
Software Collections	Software Profiles Software Profiles will appear in the Software Profiles tab with the same names and settings as were configured in Avalanche Manager.
Mobile Device Groups	Mobile Device Groups Static Device Groups will not automatically contain mobile devices for the group. You will need to add matching devices to the group from the <i>Properties</i> dialog box for that mobile device group. The Eserver will contact the Mobile Device Server and pull the devices that match the static group into the group. For information about adding matching devices to a mobile device group, refer to the <i>Avalanche Mobility Center User's Guide</i> .
Mobile Device Inventory	Mobile Device Inventory

DOCUMENT HISTORY

- 04/13/2007. Document created.



Wavelink Corporation
1011 Western Avenue, Suite 601
Seattle, WA 98104
Main: 206.274.4280

www.wavelink.com



Migrating to Avalanche MC 4.2 011