



MIGRATING FROM AVALANCHE 4.X TO AVALANCHE MC 4.6

This document provides instructions for migrating to Avalanche MC 4.6.

This document provides instructions for migrating to Avalanche Mobility Center (Avalanche MC) 4.6.

OVERVIEW

This document contains the following sections:

- Overview
- Installing Avalanche MC 4.6
- Components Migrated
- Document History

OVERVIEW

You can install Avalanche MC 4.6 without manually uninstalling previous versions of Avalanche MC. The 4.6 installation removes the previous version of Avalanche MC and migrates your database and software collections to the new version. The database and software collections are automatically backed up before the previous version of Avalanche MC is uninstalled.

This document serves as instructions for migrating from all previous versions of Avalanche MC with the exception of 4.0. Migration from the SQL Server is not supported.

This document provides the following information:

- Installing Avalanche MC 4.6
- Components Migrated
- Document History

INSTALLING AVALANCHE MC 4.6

You can install Avalanche MC 4.6 without manually uninstalling previous versions of Avalanche MC. The 4.6 version uninstalls any previous versions of Avalanche MC that it discovers.

After the installation is complete, a log file called `migration.log` is placed in the default installation directory. This log file contains details of the migration and the components migrated.

NOTE: Once you install Avalanche MC 4.6, you may need to obtain new licensing based on your Mobile Device and Infrastructure licenses. Contact Wavelink Customer Service at 1-888-697-9283 for more information.

To install Avalanche MC 4.6:

1. Download the Avalanche MC 4.6 installation file from the [Wavelink Web site](#).
2. Double-click the file to start the installation process.

The InstallShield Wizard appears and the an *Upgrade* dialog box appears asking if you want to upgrade your Avalanche MC version.

3. Click **Yes**.

A *Welcome* dialog box appears.

4. Click **Next** to continue the installation process.

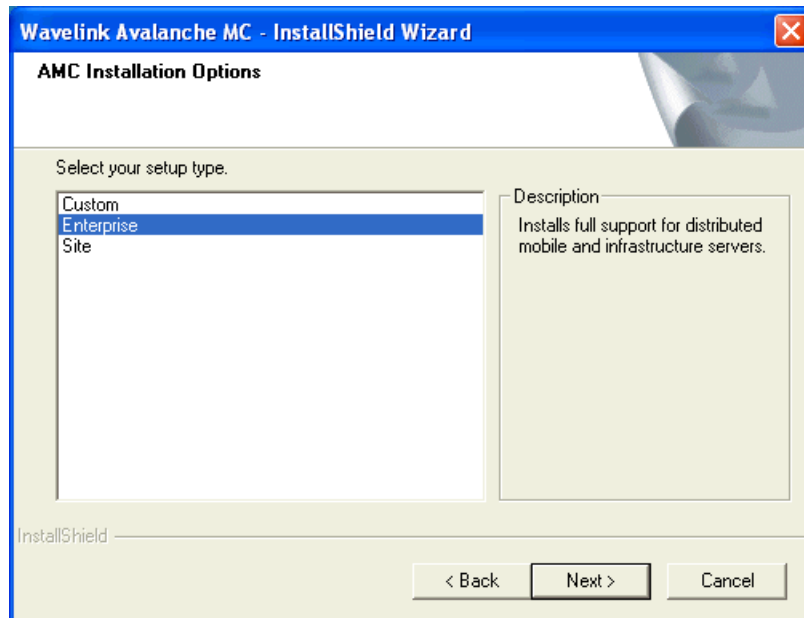


The *License Agreement* dialog box appears.

5. If you agree with the terms of the License Agreement, click **Yes**.

NOTE: If you do not click **Yes**, you will not be able to complete the installation process.

The *Installation Options* dialog box appears.



Setup Type

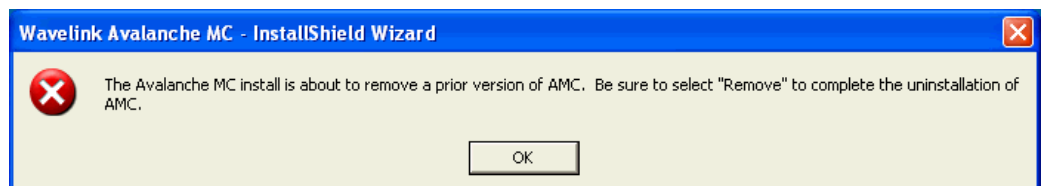
6. Select which installation type you want to install.
 - **Custom.** Allows you to select the different components you want to install.
 - **Enterprise.** Installs support for Mobile Device dServers and Infrastructure dServers.
 - **Site.** Installs one Mobile Device dServer on the local machine.
7. Click **Next**.

The *Choose Destination Location* dialog box appears.

8. Click **Next** to accept the default installation folder, or click **Browse** to navigate to a folder of your choice. After you select an installation folder, click **Next** to continue the installation process.

The installation begins and may take several minutes.

A dialog box appears reminding you to remove the previous version of Avalanche MC.

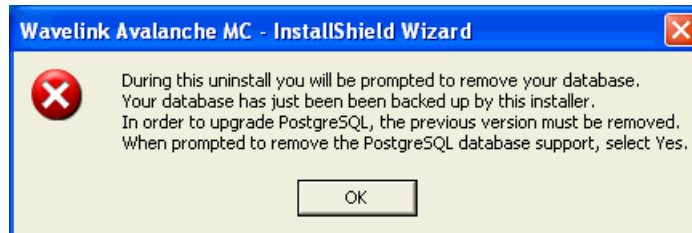


Wavelink Avalanche MC - InstallShield Wizard

9. Click **OK**.

A dialog box appears reminding you to remove your database.

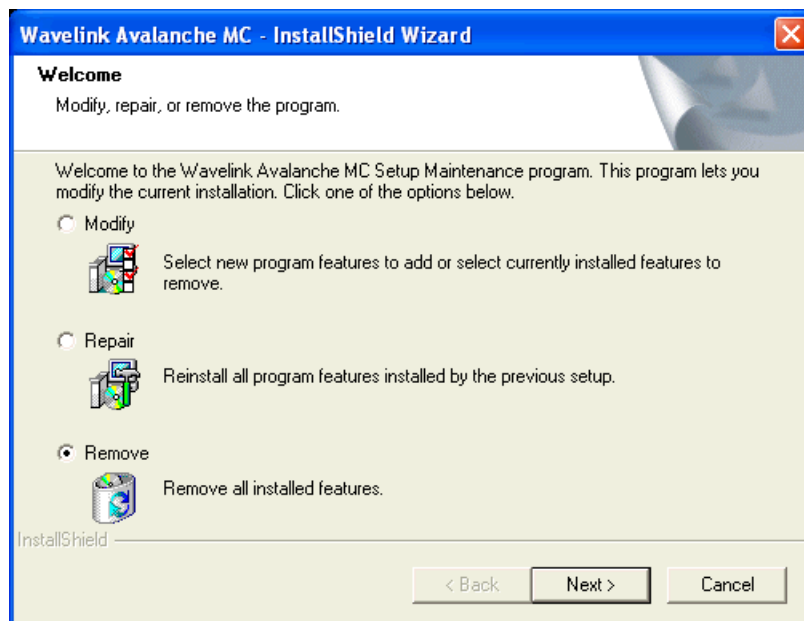
NOTE: Removing the database upgrades the PostgreSQL database to version 8.3.



Wavelink Avalanche MC - InstallShield Wizard

10. Click **OK**.

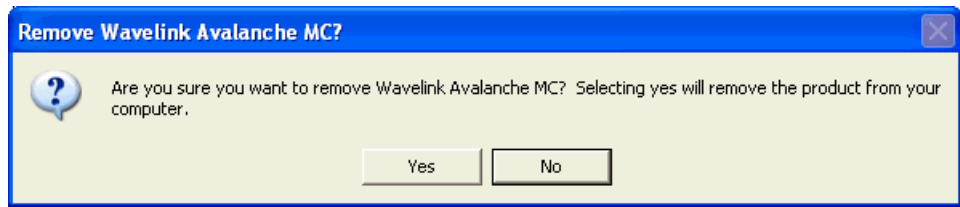
A *Welcome* dialog box appears.



Remove Avalanche MC

11. Select the **Remove** option and click **Next** to remove the previous version of Avalanche MC.

The *Remove Wavelink Avalanche MC?* dialog box appears asking if you are sure you want to remove Avalanche MC.

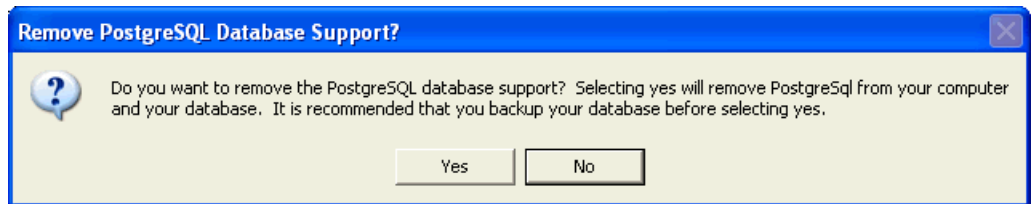


Remove Wavelink Avalanche MC? Dialog Box

12. Click **Yes**.

NOTE: This removes the previous version of Avalanche MC.

The *Remove PostgreSQL Database Support?* dialog box appears asking if you want to remove the PostgreSQL database.



Remove PostgreSQL Database Support? Dialog Box

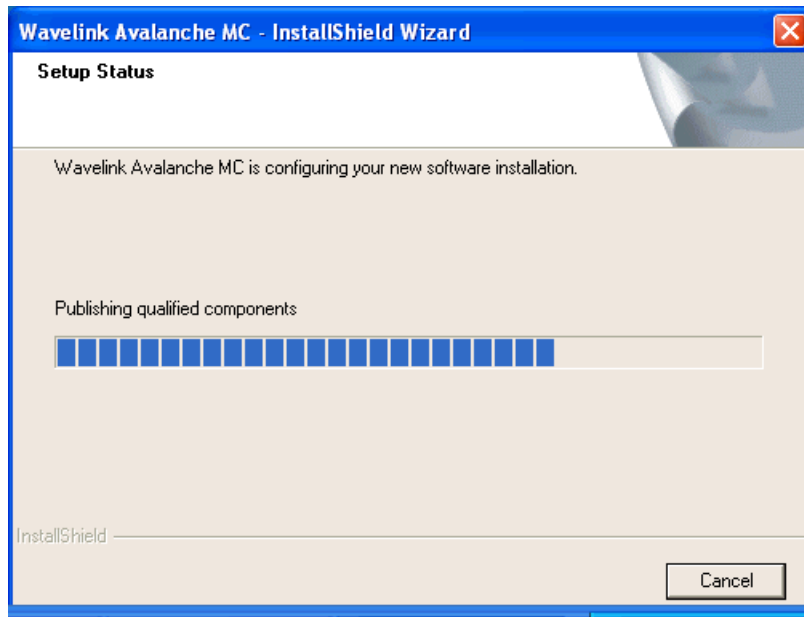
13. Click **Yes** to upgrade to PostgreSQL 8.3.

Click **No** to retain the older version of the database.

Avalanche MC and the database are removed and the uninstallation is complete.

14. Click **Finish**.

Avalanche MC 4.6 begins to install. The *Setup Status* dialog box appears.



Setup Status

Avalanche MC and PostgreSQL begin to install a dialog box appears asking if you have a backup file you want to migrate.

15. If you have a back up file you wish to migrate, click **Yes** to locate and import the file.

If you do not have a back up file, click **No** to continue the installation.

The `migration.log` file appears just before the installation is completed. This file is for informational use and can be reviewed or closed at your discretion.

16. When the installation is complete, click **Finish**.

Once the installation is complete, you should activate this installation of Avalanche MC for your network. For more information about activating Avalanche MC, refer to *Wavelink Avalanche Mobility Center User's Guide*.

NOTE: If you are migrating to Avalanche MC Enterprise, you must create new dServer packages and deploy them to any dServers previously created in Avalanche MC. For Infrastructure dServers, you must create the full deployment package, not the lightweight version. For more information about creating and deploying dServer packages, refer to the *Wavelink Avalanche MC User Guide*.

COMPONENTS MIGRATED

Review the `migration.log` file located in the default installation directory for a complete list and details of all components migrated.

NOTE: The dServer Location packages are not migrated. All package information is in the Console, but the actual package is not there. You will need to edit and or/rebuild the package entry to obtain the packages again.

The following components are migrated:

- Users and Permissions
- Regions
- Alert Profiles
- Infrastructure Profiles
- Infrastructure dServer Profiles
- Event Log
- Network Profiles
- Software Profiles
- Firmware
- Mobile Device Groups

DOCUMENT HISTORY

- 05/16/2008. Document created.



Wavelink Corporation
1011 Western Avenue, Suite 601
Seattle, WA 98104
Main: 206.274.4280

www.wavelink.com



Migrating to Avalanche MC 4.6 06