



MIGRATING FROM AVALANCHE MC 4.2.0 TO AVALANCHE MC 4.2.1

This document provides instructions for migrating to Avalanche MC 4.2.1.

This document provides instructions for migrating Avalanche Mobility Center (Avalanche MC) 4.2.0 to Avalanche Mobility Center 4.2.1.

OVERVIEW

This document contains the following sections:

- Overview
- Removing Avalanche MC 4.2.0 Method
- Installing Avalanche MC 4.2.1 Over 4.2.0 Method
- Deploying dServers
- Components Migrated
- Document History

OVERVIEW

This document provides information about the two methods to migrate to Avalanche MC 4.2.1:

- Removing Avalanche MC 4.2.0 Method
- Installing Avalanche MC 4.2.1 Over 4.2.0 Method

The document also provides the following information:

- Deploying dServers
- Components Migrated

REMOVING AVALANCHE MC 4.2.0 METHOD

Using this method, you perform the following tasks:

- Backing Up The System
- Removing Avalanche MC 4.2.0
- Installing Avalanche MC 4.2.1
- Restoring the System

NOTE: Although you perform a system back up which retains the database and software collections, this document includes instructions for manually backing up the data base and software collections. For information about manually backing up the database, refer to *Backing Up the PostgreSQL Database* on page 4

BACKING UP THE SYSTEM

When you back up Avalanche MC, the PostgreSQL database information and software collections are both saved in a zip file. This section provides information about using the Task Scheduler to backup the Avalanche MC system. Avalanche MC Scheduled Task Wizard provides the capability to backup and restore your entire system. You should back up the system regularly, and also when uninstalling Avalanche MC. If for any reason Avalanche MC files are deleted or corrupted, you will be able to restore them from the backup files.

To back up the system:

1. Select **Task Schedule** from the **Tools** menu.



The *Task Schedule* dialog box appears.

2. Click **Add**.

The *Select A Task* dialog box appears.

3. Select **System Backup** from the **Task Type** list and click **Next**.

The *Create A System Backup* dialog box appears.

4. In the **Tag Name** text box, enter a name for the system backup and click **Next**.

NOTE: The tag is an identifier that can be used to select the correct file when restoring the system. The tag is not the same as the name of the zip file.

The *Select Scheduling Options* dialog box appears.

5. Schedule when you want the task to occur.

For detailed information about scheduling options, refer to the Avalanche MC User Guide.

6. Click **Next**.

The *Review Your Task* dialog box appears.

7. Review your task to ensure that it is correct and click **Next**.

The *Task Scheduled* dialog box appears.

8. Click **Next** to schedule a new event, or click **Finish** to return to the *Task Schedule* dialog box.

The task is added to the **Scheduled and Recurring Tasks** list. The task will run according to the schedule, and once it has completed, it will move to the **Successfully Completed Tasks** list.

REMOVING AVALANCHE MC 4.2.0

Remove Avalanche MC after you back up your system

To remove:

1. From the **Start** menu, select **All Programs > Wavelink Avalanche MC > Uninstall Avalanche MC**.
2. Follow the prompts to completely remove Avalanche MC.

INSTALLING AVALANCHE MC 4.2.1

Once Avalanche MC 4.2.0 is completely removed from your system, you can install Avalanche MC 4.2.1.

To install Avalanche MC:

1. Download the Avalanche MC executable from the [Wavelink Web site](#).
2. Double-click the file to start the installation process.
3. Follow the prompts to install Avalanche MC.

RESTORING THE SYSTEM

Once you install Avalanche MC 4.2.1, you can use the Task Scheduler to restore the 4.2.0 infor-

mation to Avalanche MC.

To restore the system:

1. Select **Task Schedule** from the **Tools** menu.

The *Task Schedule* dialog box appears.

2. Click **Add**.

The *Select A Task* dialog box appears.

3. Select **Restore System** from the **Task Type** list and click **Next**.

The *Restore A System Backup* dialog box appears.

4. Select the system backup you wish to restore and click **Next**.

- Select **Restore the most recent system backup** to restore Avalanche MC to the latest backup file.
- Select **Restore by path** to specify the file name and path of the desired system backup.

NOTE: The default file path is C:\Program Files\Wavelink\AvalancheMC\backup

- Select **Restore selected** to choose the desired system backup according to the tag name.

The *Select Scheduling Options* dialog box appears.

5. Schedule when you want the restore task to occur.

6. Click **Next**.

The *Review Your Task* dialog box appears.

7. Review your task to ensure that it is correct and click **Next**.

The *Task Scheduled* dialog box appears.

8. Click **Next** to schedule a new event, or click **Finish** to return to the *Task Schedule* dialog box.

The task is added to the **Scheduled and Recurring Tasks** list. The task will run according to its schedule, and once it has completed, it will move to the **Successfully Completed Tasks** list.

Once Avalanche MC is migrated, you need to create dServer packages and deploy those packages to previously created dServers. For more information, refer to *Deploying dServers* on page 9.

INSTALLING AVALANCHE MC 4.2.1 OVER 4.2.0 METHOD

You can install Avalanche MC 4.2.1 without manually uninstalling previous versions of Avalanche MC. The 4.2.1 installation removes the previous version of Avalanche MC and migrates your database and software collections to the new version. The database and software collections are automatically backed up before the previous version of Avalanche MC is uninstalled.

NOTE: Although the database and software collections are backed up automatically during the migration, this document includes instructions for manually backing up the data base and software collections.

This document provides the following information:

- Backing Up the PostgreSQL Database
- Backing Up the Software Collections
- Installing Avalanche MC 4.2.1
- Components Migrated
- Document History

BACKING UP THE POSTGRESQL DATABASE

The PostgreSQL database is automatically backed up during migration. You can also back up the database manually. This section provides information about manually backing up the database.

The PostgreSQL database for Avalanche MC should be backed up regularly. Plan to back up the database before uninstalling or upgrading to a newer version of Avalanche MC. If for any reason the database is deleted or corrupted, you can restore it from the backup files.

The PostgreSQL database and software collections must be backed up at the same time. If you back up your database, make changes to the software packages, then back up the software collections, you will be unable to restore your software collections because they will be out of synchronization with the database.

NOTE: You should create a backup directory before using this procedure. Use the same directory for storing the PostgreSQL database backup and the software collections backup.

To back up the PostgreSQL database:

1. From the **Start** menu, select **Programs > Accessories > Command Prompt**.

The command prompt appears.

2. Type `cd \Program Files\Wavelink\AvalancheMC\db\bin` and press the **Enter** key.

The prompt should appear: `C:\Program Files\Wavelink\AvalancheMC\db\bin>`.

3. Type `pg_dump -c -U postgres amc42 > [location of your backup directory]\backup.sql` and press the **Enter** key.

The information is extracted from the database and saved as `backup.sql` in the backup directory.

BACKING UP THE SOFTWARE COLLECTIONS

Software collections are automatically backed up during migration. You can also back up software collections manually. This section provides information about manually backing up software collections.

The software collections for Avalanche MC should be backed up regularly. Plan to back up your software collections before uninstalling or upgrading to a newer version of Avalanche MC. If for any reason the software collections are deleted or corrupted, you can restore them from the backup files.

The PostgreSQL database and software collections must be backed up at the same time. If you back up your database, make changes to software packages, then back up the software collections, the software collections will be out of synchronization with the database and will not migrate properly.

NOTE: You should create a backup directory before using this procedure. Use the same directory for storing the PostgreSQL database backup and the software collections backup.

NOTE: This process uses WinZip to compress the software collections. If you choose to use another compression method, refer to the program user guide.

To save backup software collections:

1. Open the Windows Explorer and navigate to `Program Files > Wavelink > AvalancheMC`.
2. Right-click the `avapackages` folder and select `Winzip > Add to Zip file`.

The *Add* dialog box appears.

3. Type the location of the backup directory in the `Add to archive` text box and click `Add`.

The software collections are zipped and saved in the backup directory.

INSTALLING AVALANCHE MC 4.2.1

You can install Avalanche MC 4.2.1 without manually uninstalling previous versions of Avalanche MC. The 4.2.1 version uninstalls any previous versions of Avalanche MC that it discovers.

After the installation is complete, a log file called `migration.log` is placed in the default installation directory. This log file contains details of the migration and the components migrated.

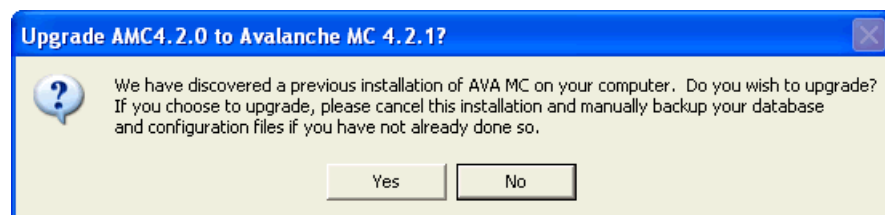
NOTE: Installation of Avalanche MC 4.2.1 should not require new licenses for your mobile device or infrastructure devices. If you have trouble with licensing, contact Wavelink Customer Service at 1-888-697-9283 for assistance.

To install Avalanche MC 4.2.1:

1. Download the Avalanche MC executable from the [Wavelink Web site](#).
2. Double-click the file to start the installation process.

The InstallShield Wizard appears and the *Upgrade AMC 4.1.1 to Avalanche MC 4.2.0* dialog box appears asking if you want to upgrade your Avalanche MC version.

If you are upgrading from another version of Avalanche MC 4.1x (Avalanche MC 4.1 or Avalanche MC 4.1.2) the dialog box will display accordingly.



Upgrading Avalanche MC

3. Click **Yes**.

A *Welcome* dialog box appears.

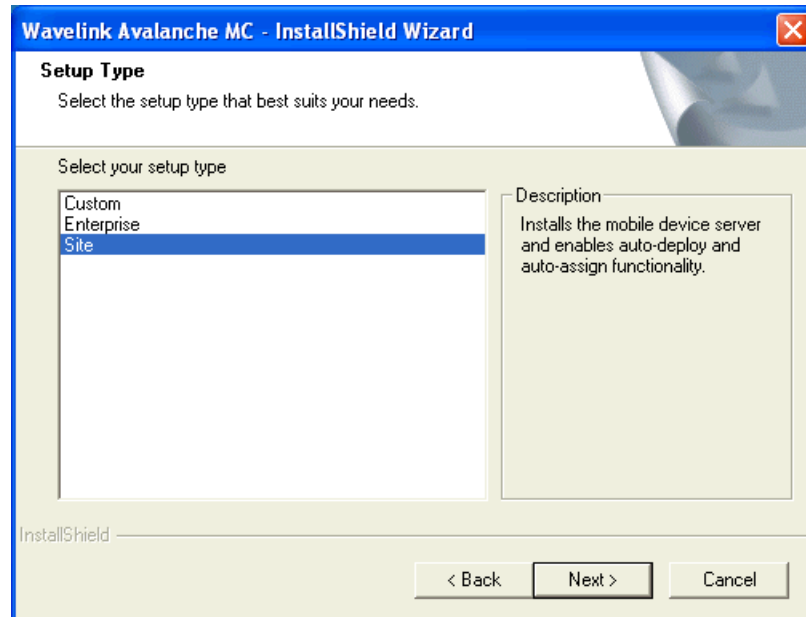
- Click **Next** to continue the installation process.

The *License Agreement* dialog box appears.

- If you agree with the terms of the License Agreement, click **Yes**.

NOTE: If you do not click **Yes**, you will not be able to complete the installation process.

The *Setup Type* dialog box appears.



Setup Type

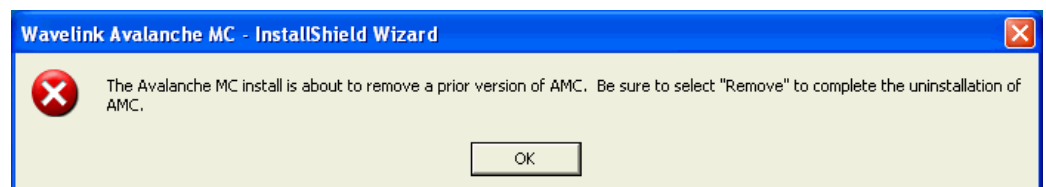
- Select which installation type you want to install.
 - Custom.** Allows you to select the different components you want to install.
 - Enterprise.** Installs support for Mobile Device dServers and Infrastructure dServers.
 - Site.** Installs one Mobile Device dServer on the local machine.

- Click **Next**.

The *Choose Destination Location* dialog box appears.

- Click **Next** to accept the default installation folder, or click **Browse** to navigate to a folder of your choice. After you select an installation folder, click **Next** to continue the installation process.

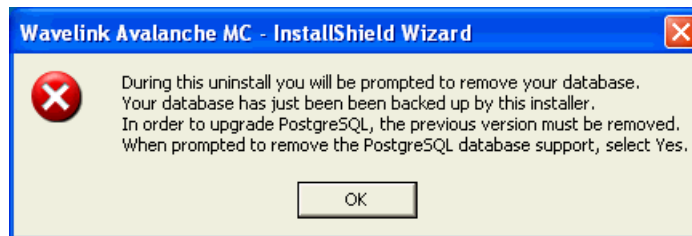
A dialog box appears reminding you to remove the previous version of Avalanche MC.



9. Click **OK**.

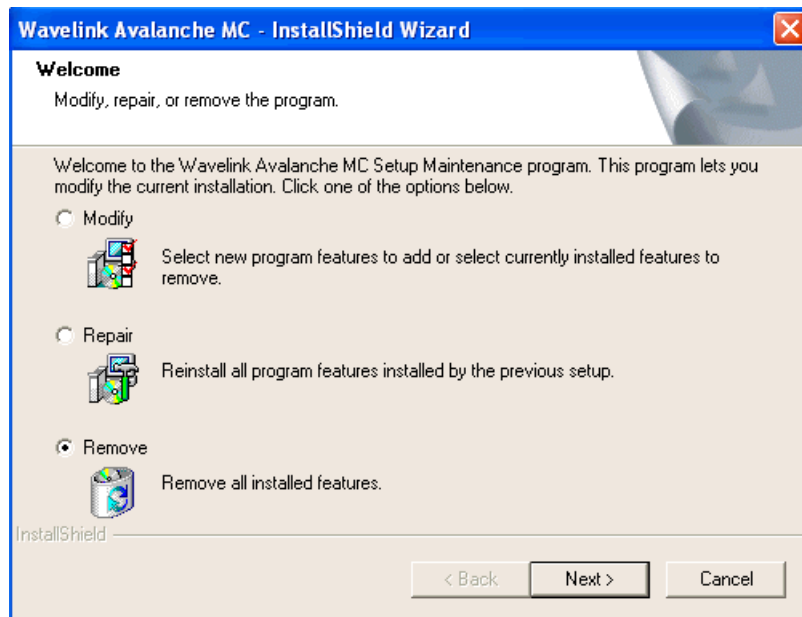
A dialog box appears reminding you to remove your database.

NOTE: Removing the database upgrades the PostgreSQL database from version 8.0.3 to 8.0.12.



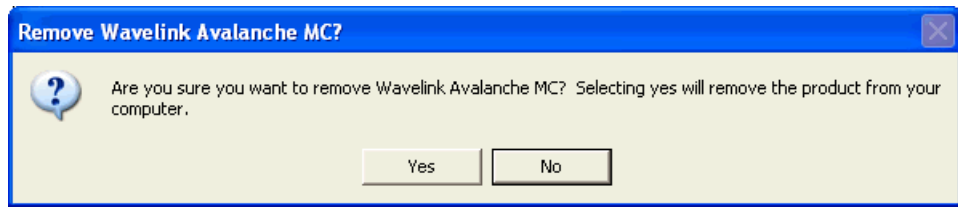
10. Click **OK**.

A *Welcome* dialog box appears.



11. Select the **Remove** option and click **Next** to remove the previous version of Avalanche MC.

The *Remove Wavelink Avalanche MC?* dialog box appears asking if you are sure you want to remove Avalanche MC.

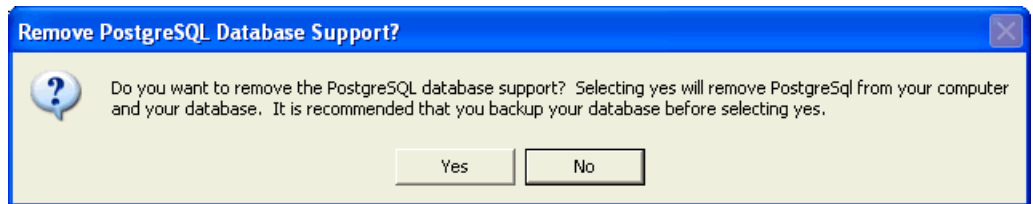


Remove Wavelink Avalanche MC? Dialog Box

12. Click **Yes**.

NOTE: This removes the previous version of Avalanche MC.

The *Remove PostgreSQL Database Support?* dialog box appears asking if you want to remove the PostgreSQL database.



Remove PostgreSQL Database Support? Dialog Box

13. Click **No** to retain the PostgreSQL 8.0.3 database.

NOTE: Because Avalanche MC 4.2.0 and Avalanche MC 4.2.1 both contain the PostgreSQL 8.0.12 database, you do not need to remove the database.

14. Once Avalanche MC and the database are removed, click **Finish**.

Avalanche MC 4.2 is installed.

If you are installing Avalanche MC Site, the following Avalanche Site Backup File dialog box appears.

15. If you have a back up file you wish to migrate, click **Yes** to locate and import the file.

If you do not have a back up file, click **No** to continue the installation.

The `migration.log` file appears just before the installation is completed. This file is for informational use and can be reviewed or closed at your discretion.

16. When the installation is complete, click **Finish**.

Once the installation is complete, you should activate this installation of Avalanche MC for your network. For more information about activating Avalanche MC, refer to *Wavelink Avalanche Mobility Center User's Guide*.

Once Avalanche MC is migrated, you need to create dServer packages and deploy those packages to previously created dServers. For more information, review the following section.

DEPLOYING DSERVERS

Once you complete the Avalanche MC migration, you must create new dServer packages (both Mobile Device and Infrastructure) and deploy the new packages to any dServers created in the previous version of Avalanche MC. When you deploy the new packages, the previous dServers will be shut down, the new packages will install and then start. For Infrastructure dServers, you must create the full deployment package, not the lightweight version. For more information about creating and deploying dServer packages, refer to the *Wavelink Avalanche MC User's Guide*.

COMPONENTS MIGRATED

The following table provides information about the components that are migrated from Avalanche MC 4.2.0 to Avalanche MC 4.2.1. The first column lists the Avalanche MC 4.2.0 components. The second column lists what those components migrate to in Avalanche MC 4.2.1.

Avalanche MC 4.2.0 Component	Migrated to:
Users	Users
Regions	Regions
Alert Profiles	Alert Profiles
Infrastructure Profiles	Infrastructure Profiles Note: Migrated legacy infrastructure profiles are not editable.
dServer Locations	dServer Locations
Event Log	Event Log
Network Profiles	Network Profiles
Software Profiles	Software Profiles
Firmware	Firmware Note: Unsupported firmware is not migrated.
Mobile Device Groups	Mobile Device Groups

DOCUMENT HISTORY

- 08/22/2007. Document created.



Wavelink Corporation
1011 Western Avenue, Suite 601
Seattle, WA 98104
Main: 206.274.4280

