



MIGRATING FROM AVALANCHE 4.X TO AVALANCHE MC 4.8

This document provides instructions for migrating to Avalanche MC 4.8.

This document provides instructions for migrating to Avalanche Mobility Center (Avalanche MC) 4.8.

OVERVIEW

This document contains the following sections:

- Overview
- Installing Avalanche MC 4.8
- Migration Notes
- Components Migrated
- Document History

OVERVIEW

The 4.8 installation removes the previous version of Avalanche MC and migrates your database and software profiles to the new version. The database and software profiles are automatically backed up before the previous version of Avalanche MC is uninstalled.

This document serves as instructions for migrating from all previous versions of Avalanche MC with the exception of versions 4.0 and 4.1. To migrate from 4.1 you must first migrate to 4.2 and then you will be able to move to version 4.8. Additionally, if you are using SQL Server as your database, migration is not supported.

This document provides the following information:

- Installing Avalanche MC 4.8
- Components Migrated
- Components Migrated
- Document History

INSTALLING AVALANCHE MC 4.8

You can install Avalanche MC 4.8 without manually uninstalling previous versions of Avalanche MC. The 4.8 version uninstalls any previous versions of Avalanche MC that it discovers.

After the installation is complete, a log file called `migration.log` is placed in the default installation directory. This log file contains details of the migration and the components migrated.

NOTE: Once you install Avalanche MC 4.8, you may need to obtain new licensing based on your Mobile Device and Infrastructure licenses. Contact Wavelink Customer Service at 1-888-697-9283 for more information.

To install Avalanche MC 4.8:

1. Obtain the Avalanche MC 4.8 installation package from the Wavelink Sales team.
2. Double-click the file to start the installation process.

The InstallShield Wizard appears. An *Upgrade* dialog box appears indicating that there is a previous version of Avalanche installed on your system and asks if you want to upgrade.

3. Click **Yes**.



A *Welcome* dialog box appears.

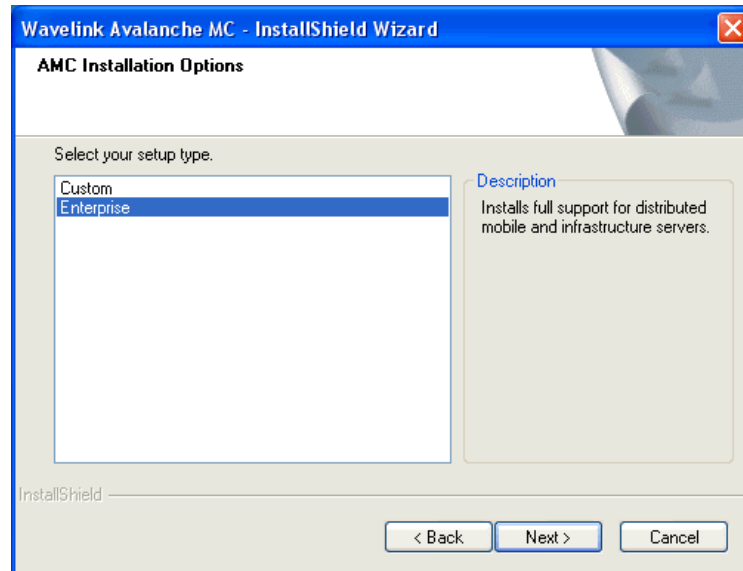
4. Click **Next** to continue the installation process.

The *License Agreement* dialog box appears.

5. If you agree with the terms of the License Agreement, click **Yes**.

NOTE: If you do not click **Yes**, you will not be able to complete the installation process.

The *Installation Options* dialog box appears.



Installation Options

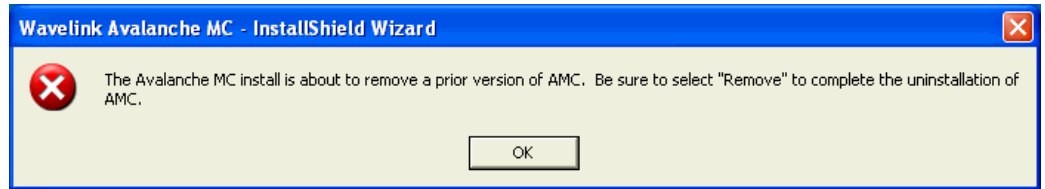
6. Select which installation type you want to install and then click **Next**.
 - **Custom**. Allows you to select the different components you want to install.
 - **Enterprise**. Installs support for Mobile Device dServers and Infrastructure dServers.

The *Choose Destination Location* dialog box appears.

7. Click **Next** to accept the default installation folder which is the folder where the previous version of Avalanche was installed. An alternate location is not supported.

NOTE: Although the dialog box allows you to browse to an alternate location, when you attempt to continue the migration, you will receive an error indicating that you must install in the same location as the previous Avalanche MC location.

The database back up and removal of the previous version of Avalanche begins and may take several minutes. A dialog box appears reminding you to remove the previous version of Avalanche MC.

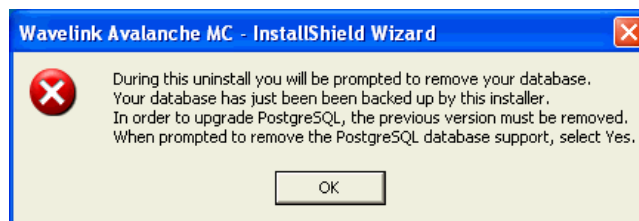


Wavelink Avalanche MC - InstallShield Wizard

8. Click **OK**.

A dialog box appears reminding you to remove your database.

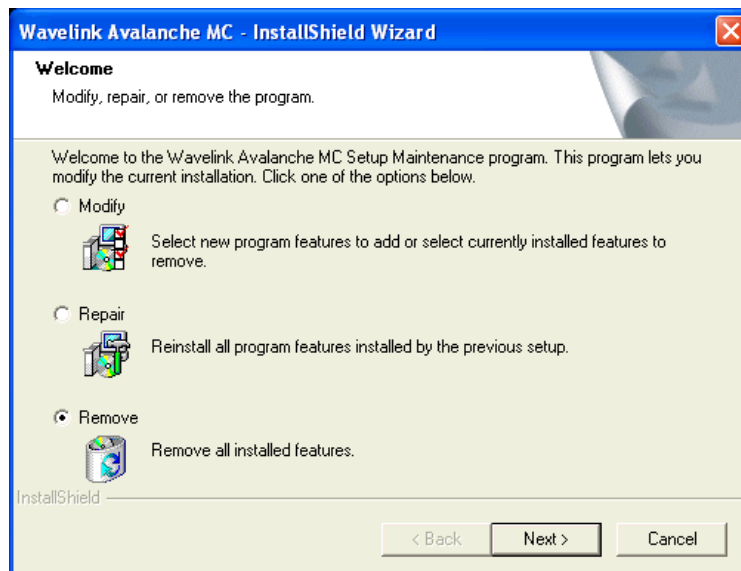
NOTE: Removing the previous database upgrades the PostgreSQL database to the latest version.



Wavelink Avalanche MC - InstallShield Wizard

9. Click **OK**.

A *Modify, Repair or Remove* dialog box appears.



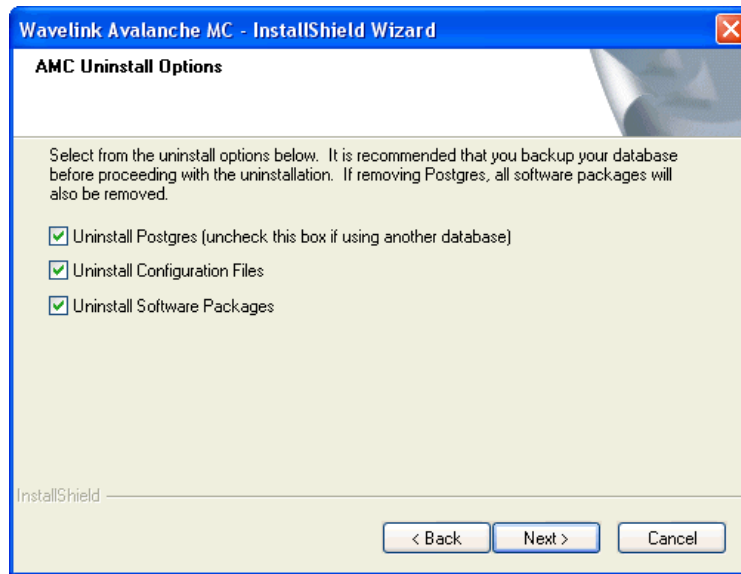
Remove Avalanche MC

10. Select the **Remove** option and click **Next** to remove the previous version of Avalanche MC.

The *Remove Avalanche MC* dialog box appears.

11. Click **Yes** to remove the product.

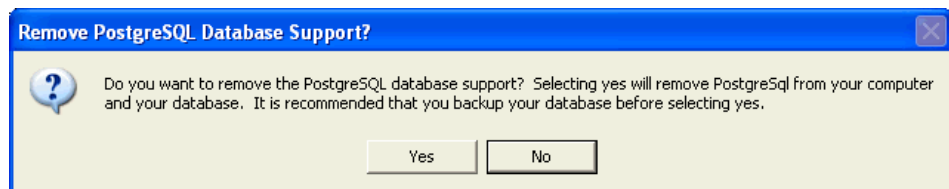
The *Uninstall Options* dialog box appears.



Uninstall Options

12. Select the components you want to remove.

The *Remove PostgreSQL Database Support?* dialog box appears asking if are sure you want to remove the PostgreSQL database.



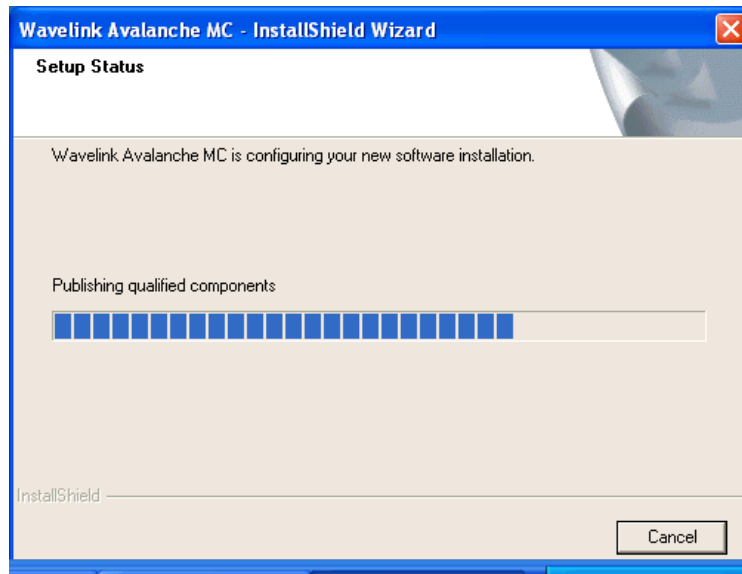
Remove PostgreSQL Database Support? Dialog Box

13. Click **Yes** to upgrade PostgreSQL.

Avalanche MC and the database are removed and the uninstallation is complete.

14. Click **Finish**.

Avalanche MC 4.8 begins to install. The *Setup Status* dialog box appears.



Setup Status

The `migration.log` file appears just before the installation is completed. This file is for informational use and can be reviewed or closed at your discretion. The *License Activator* appears also. You can activate license immediately or close the dialog box. For more information about activating Avalanche MC, refer to *Wavelink Avalanche MC User Guide*.

15. When the installation is complete, click **Finish**.

MIGRATION NOTES

- Any deployed Mobile Device or Infrastructure Servers will remain active, but as the previous version. To upgrade the servers to the new version, you will need to create and deploy new server packages.
- When you create Infrastructure Servers, you must create the full deployment package, not the lightweight version.

COMPONENTS MIGRATED

Review the `migration.log` file located in the default installation directory for a complete list and details of all components migrated.

The following components are migrated:

- Users and Permissions
- Regions
- Alert Profiles
- Infrastructure Profiles
- Infrastructure Server Profiles
- Mobile Device Server Profiles
- Network Profiles

- Software Profiles
- Event Log
- Firmware
- Mobile Device Groups
- Subsites

DOCUMENT HISTORY

- 05/13/2009. Document created.



Wavelink Corporation
6985 Union Park Ave. Ste. 335
Midvale, Utah 84047
801-316-9000

www.wavelink.com



Migrating to Avalanche MC 06